

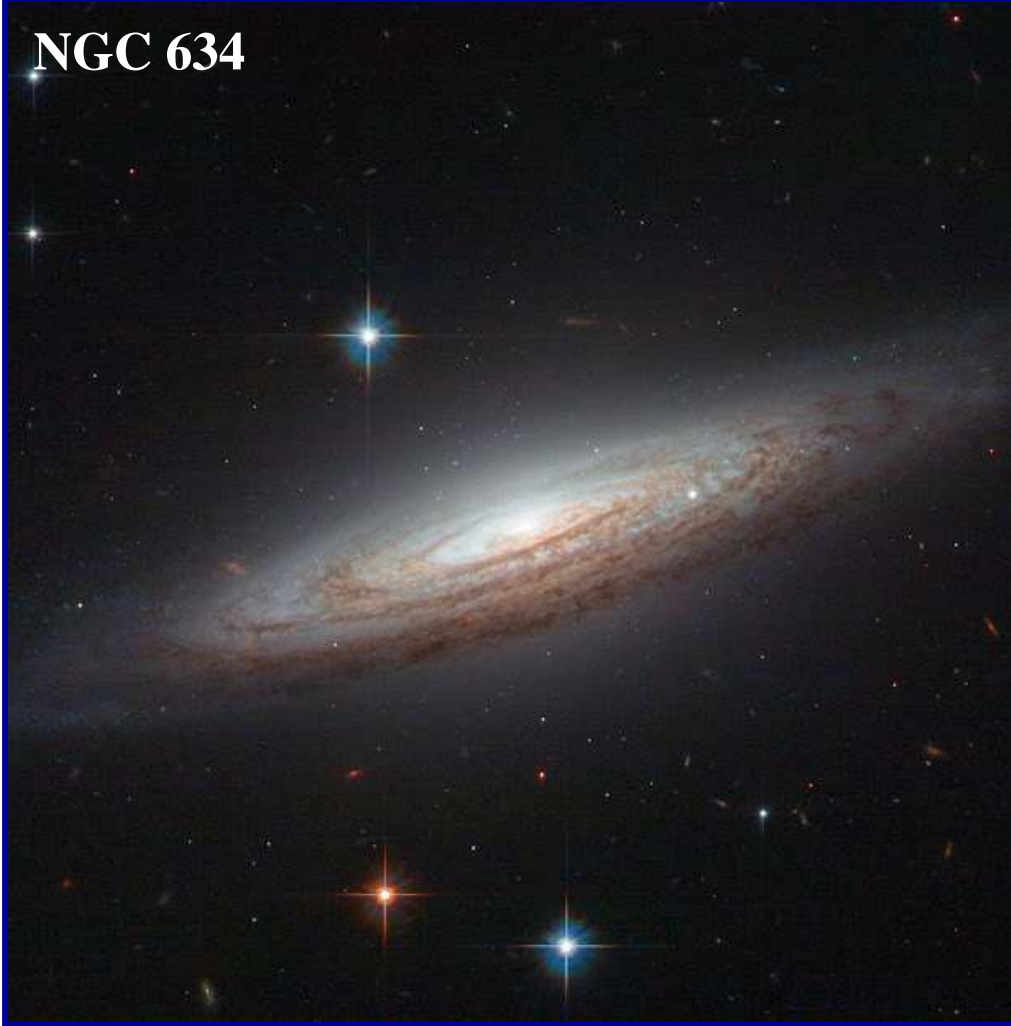


Classificação de Galáxias

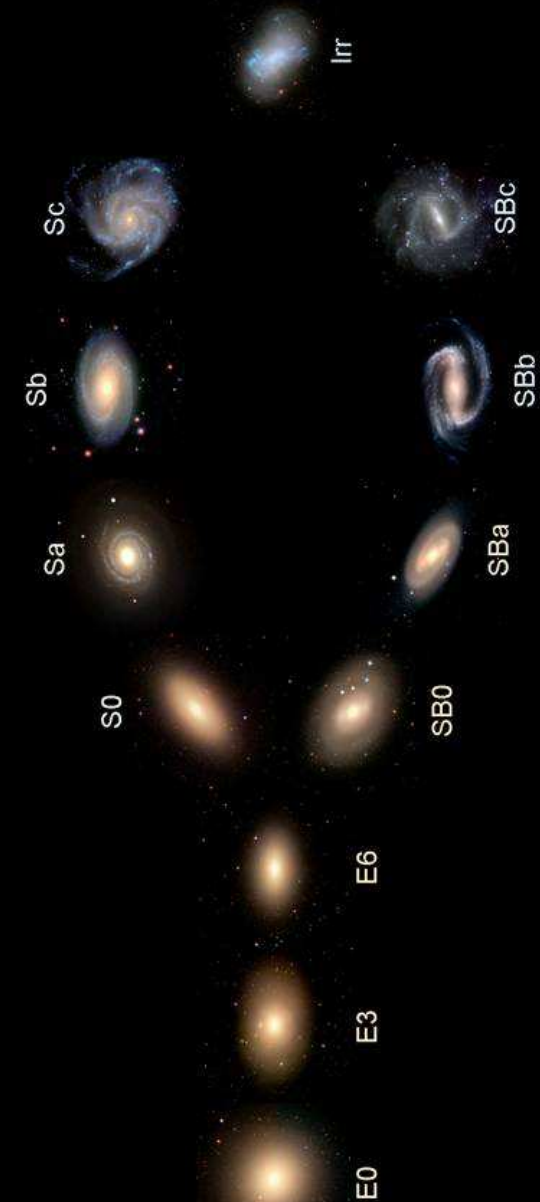
(c) 2009/2014 Grupo de Astronomia da Universidade da Madeira



NGC 634



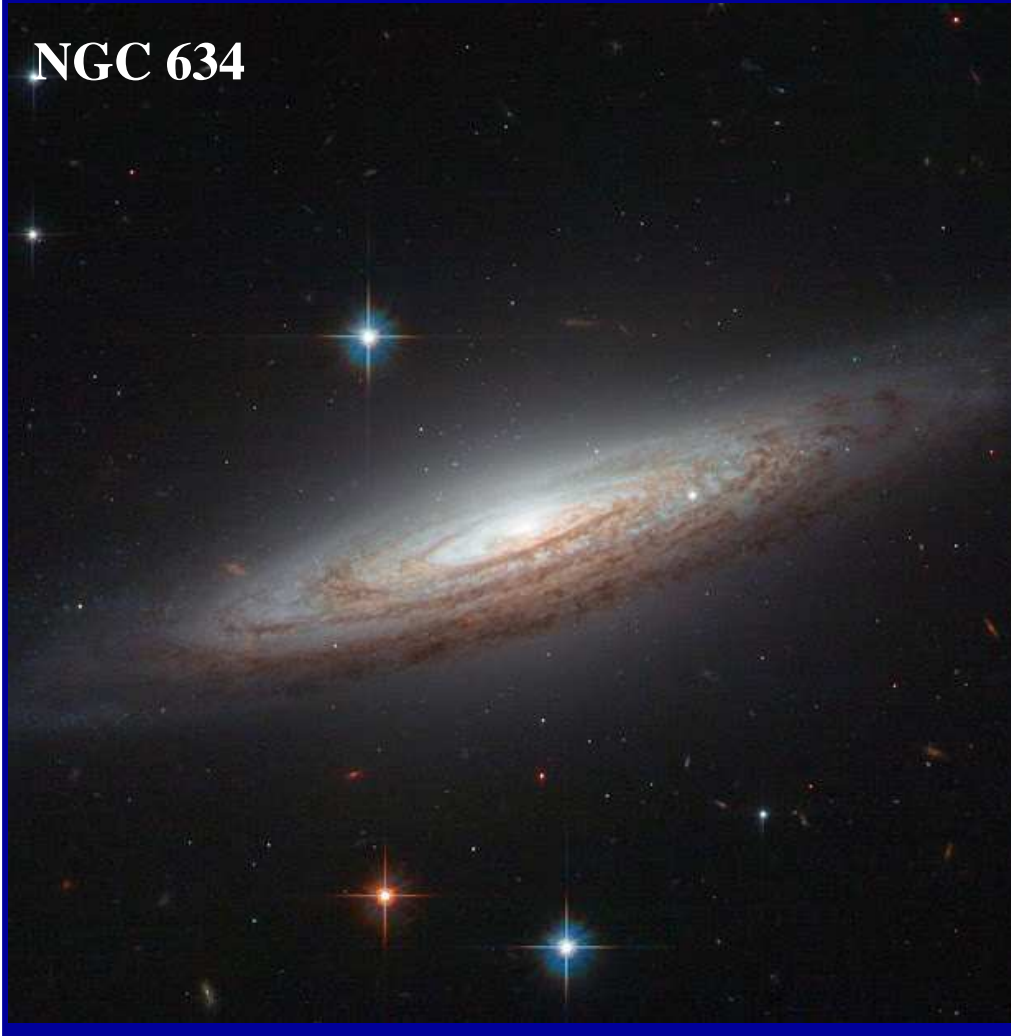
Hubble's Galaxy Classification Scheme



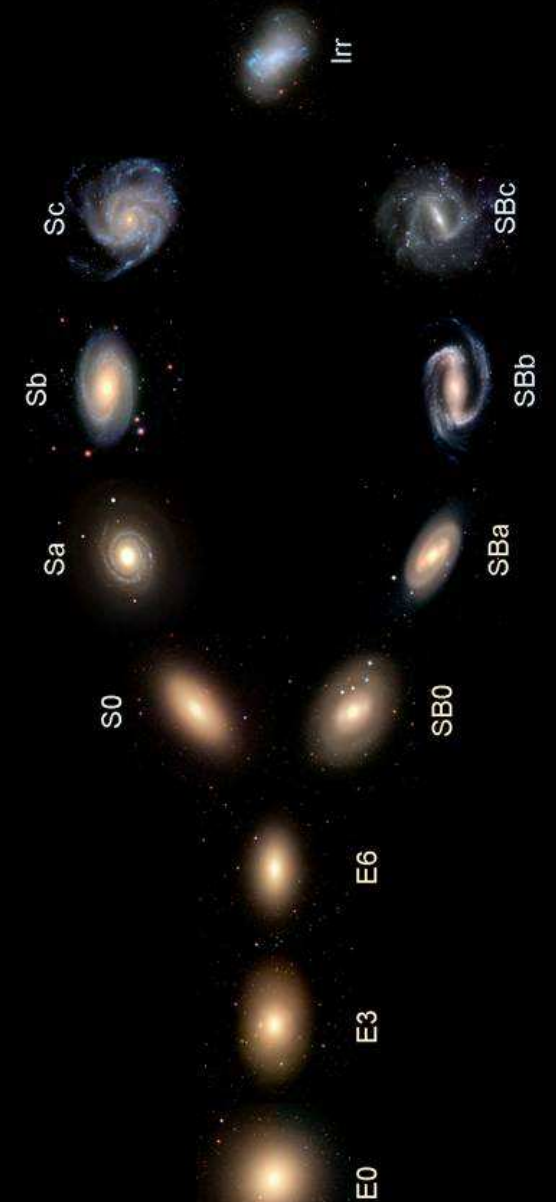


Espiral perfeita

NGC 634



Hubble's Galaxy Classification Scheme

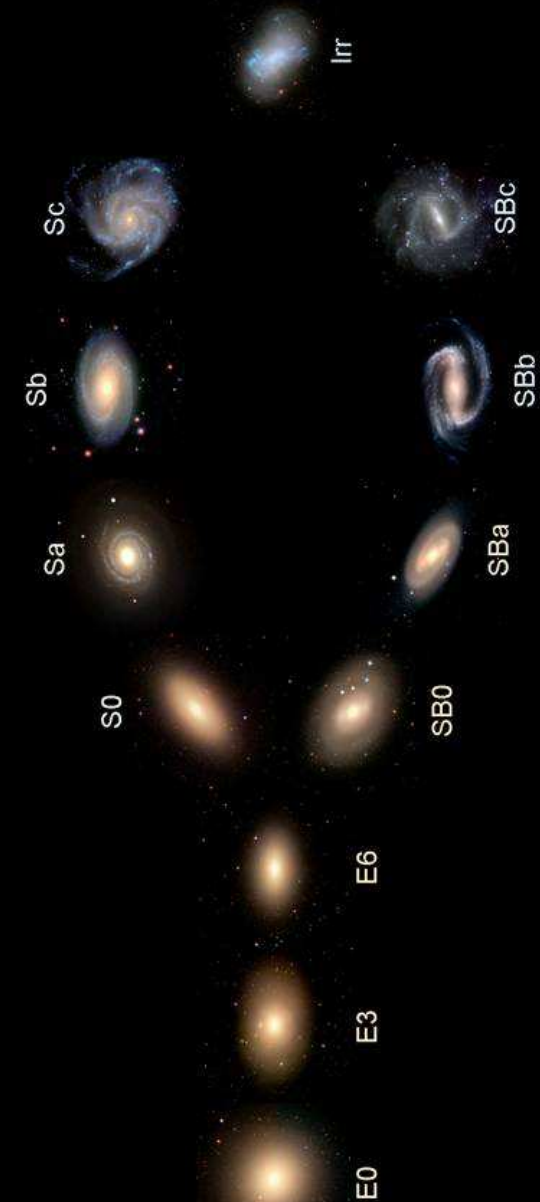




NGC 1316



Hubble's Galaxy Classification Scheme



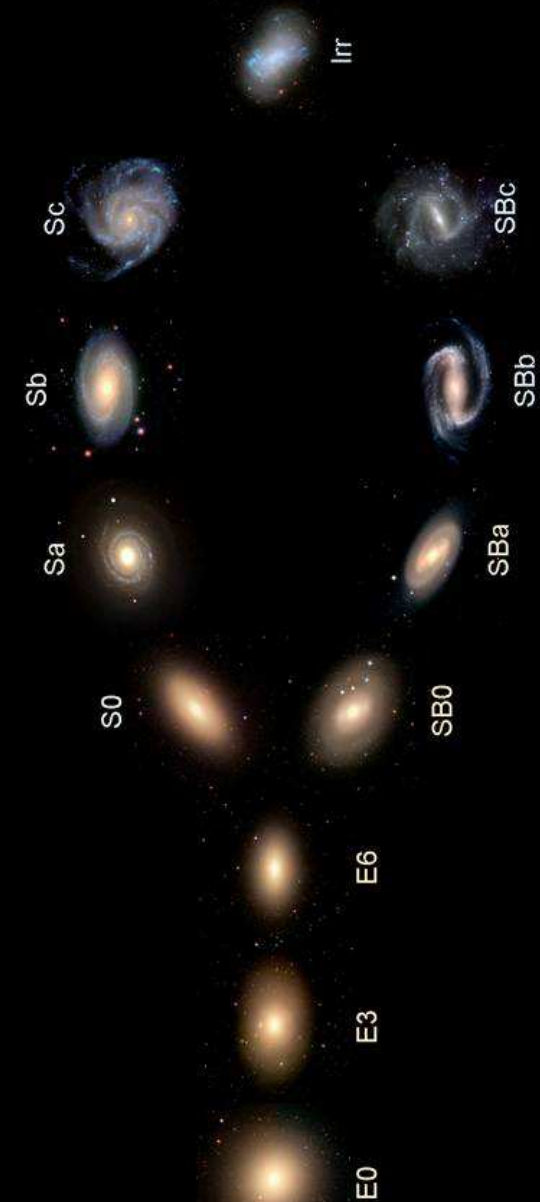


Galáxia elíptica

NGC 1316

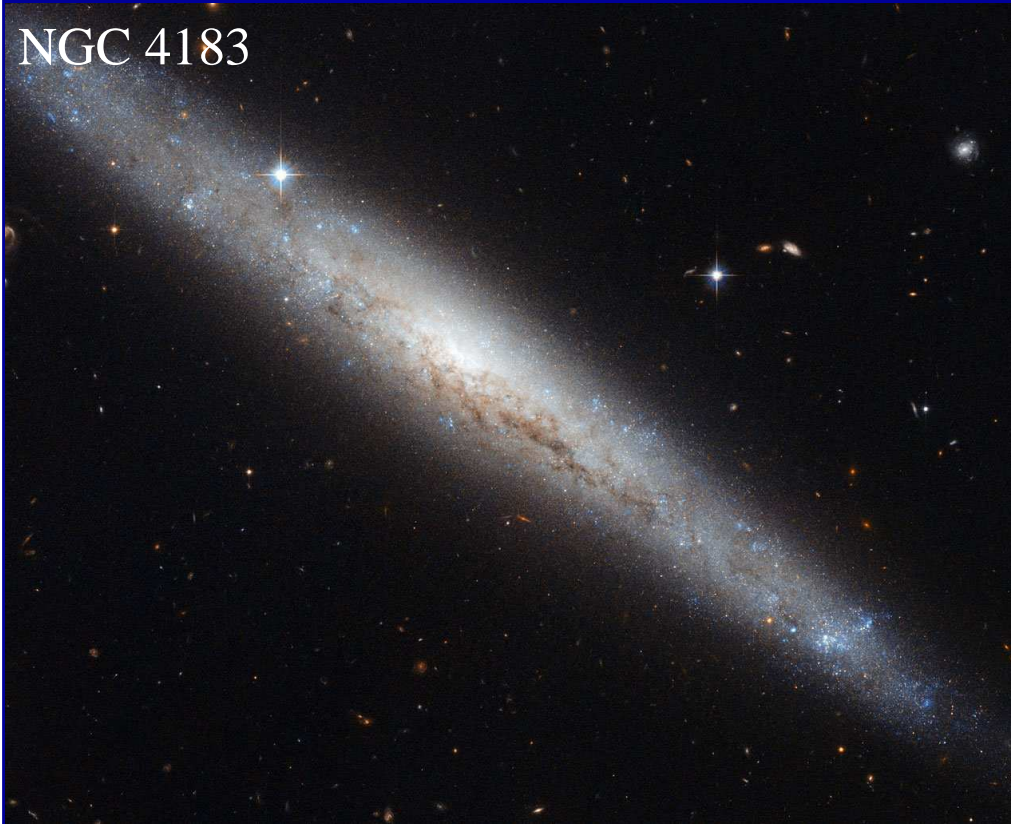


Hubble's Galaxy Classification Scheme

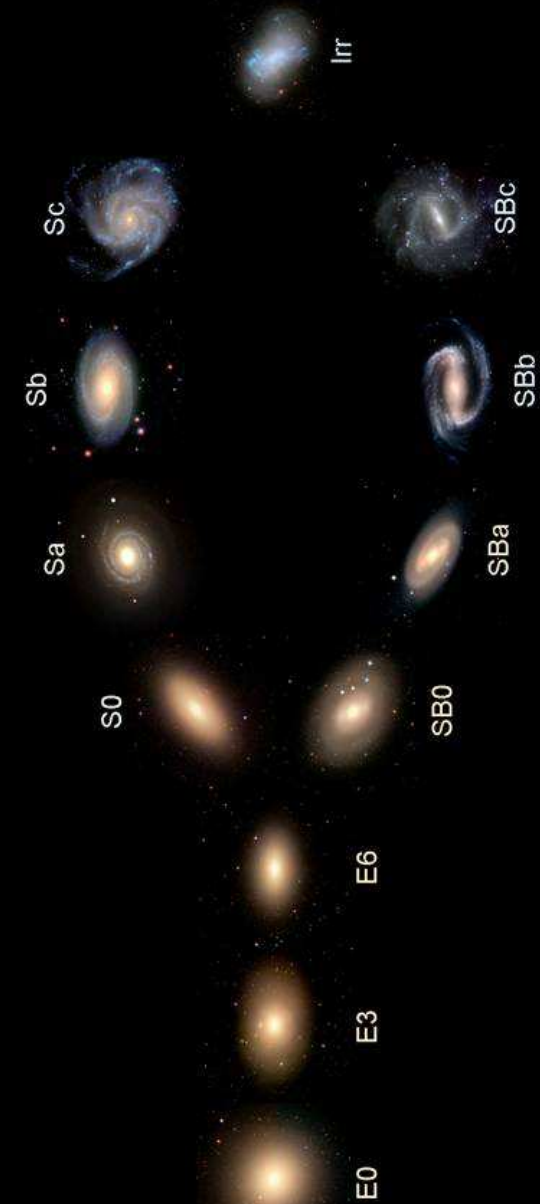




NGC 4183



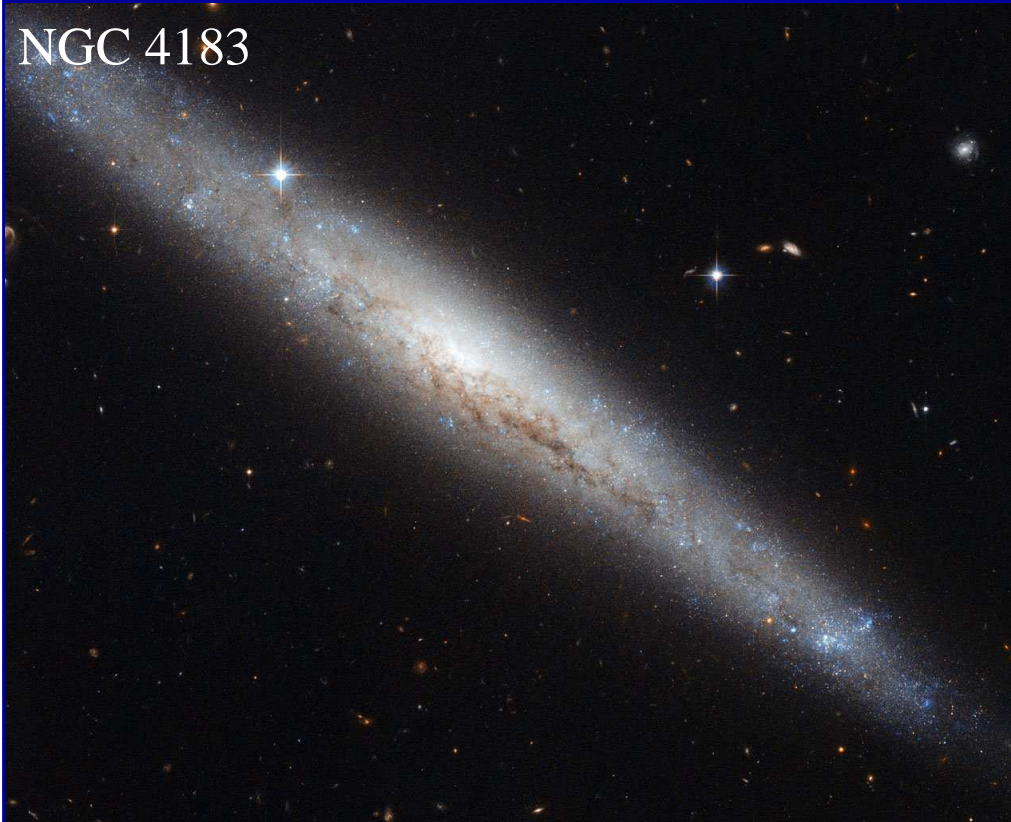
Hubble's Galaxy Classification Scheme



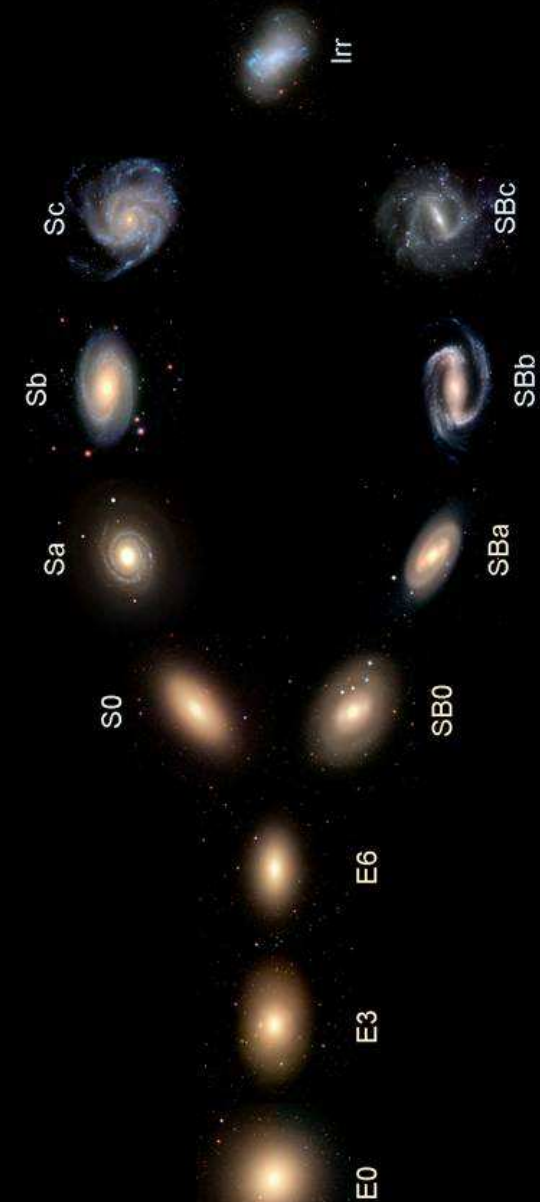


Espiral

NGC 4183



Hubble's Galaxy Classification Scheme

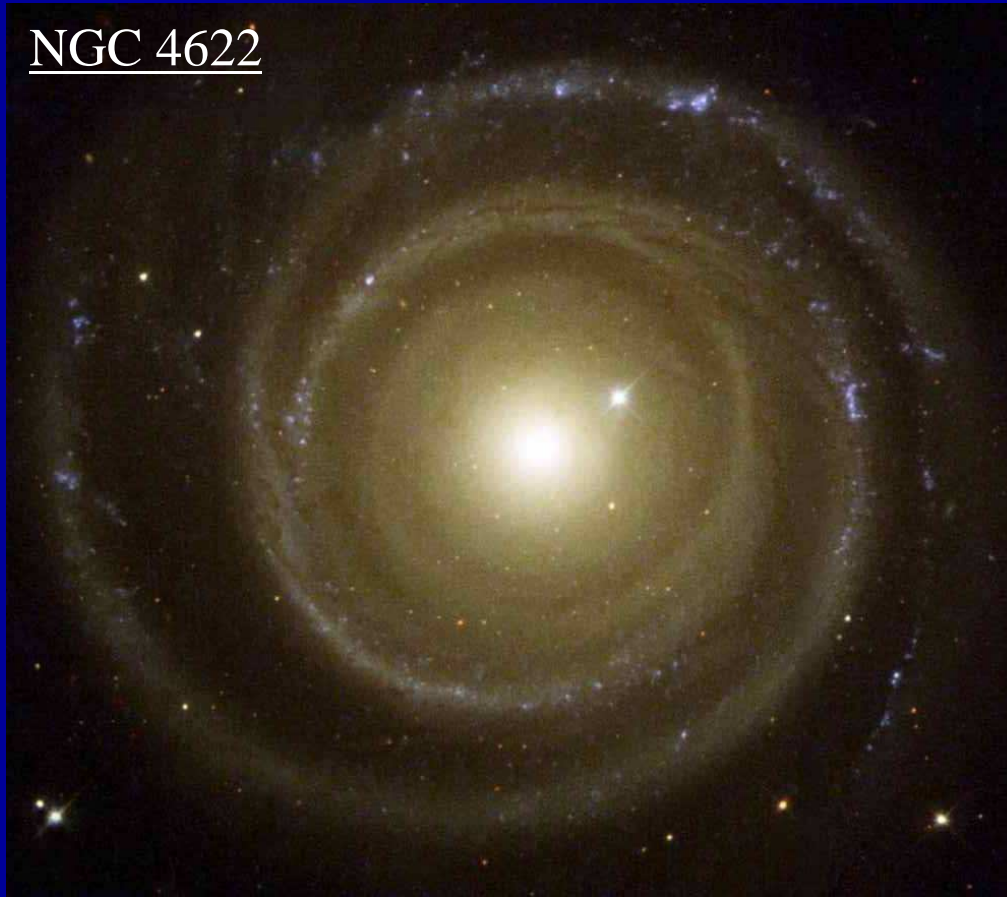




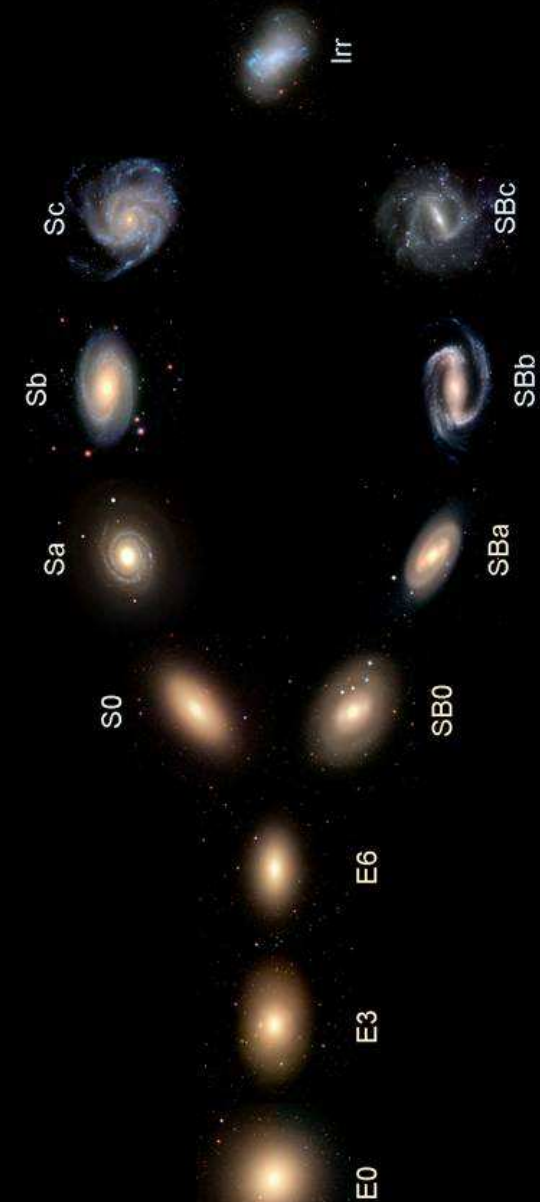
Grupo de Astronomia

∞

NGC 4622



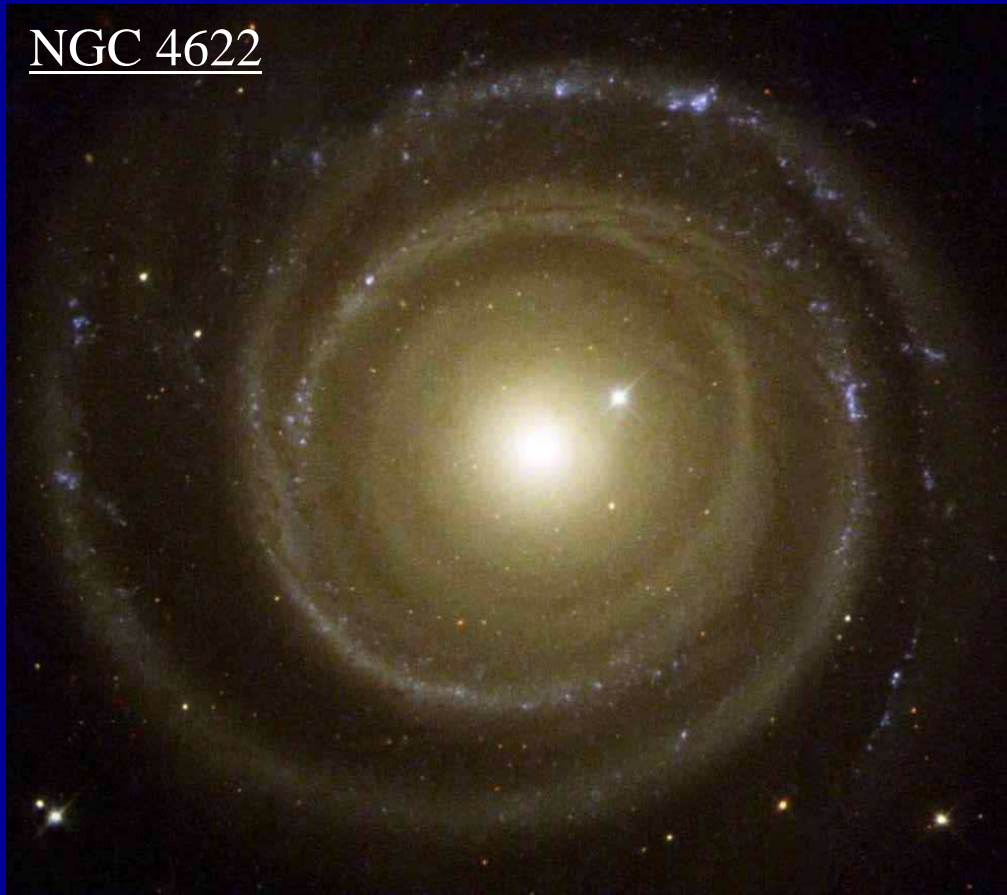
Hubble's Galaxy Classification Scheme



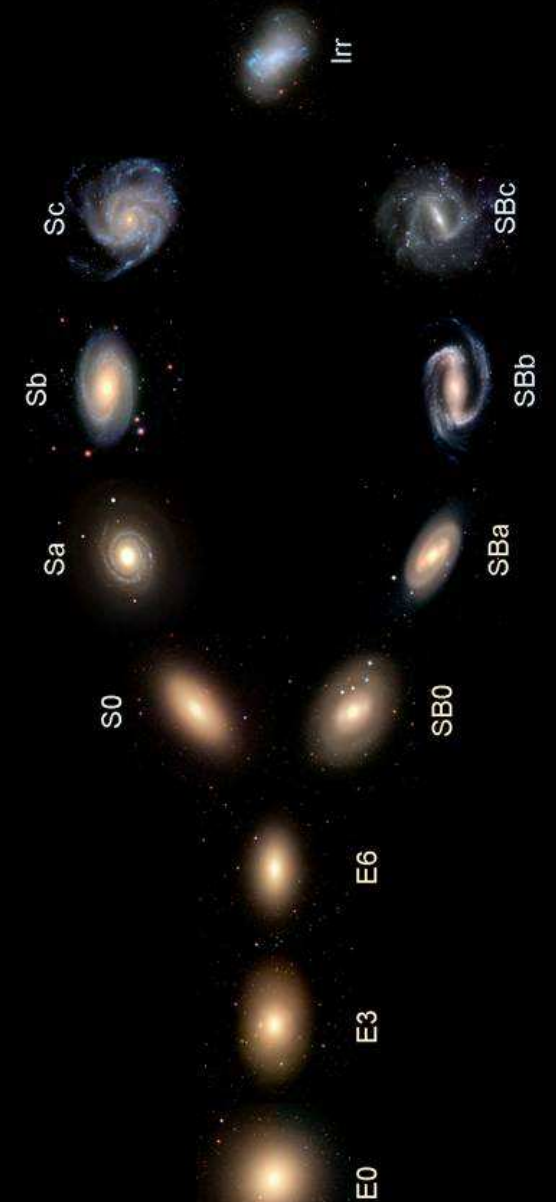


Espiral: Roda ao contrário do esperado

NGC 4622



Hubble's Galaxy Classification Scheme

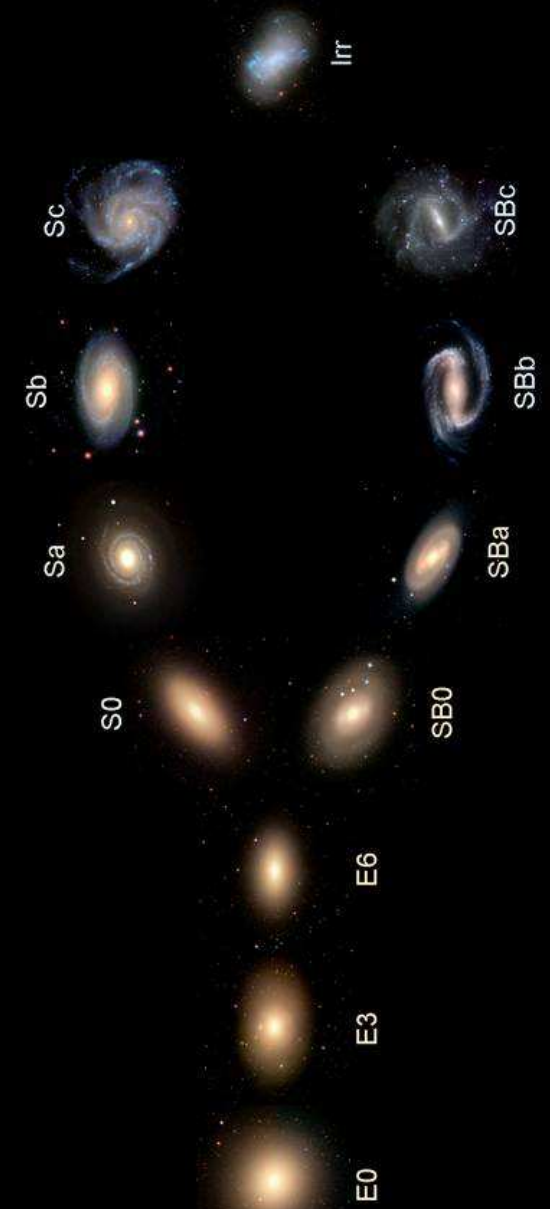




NGC1300



Hubble's Galaxy Classification Scheme



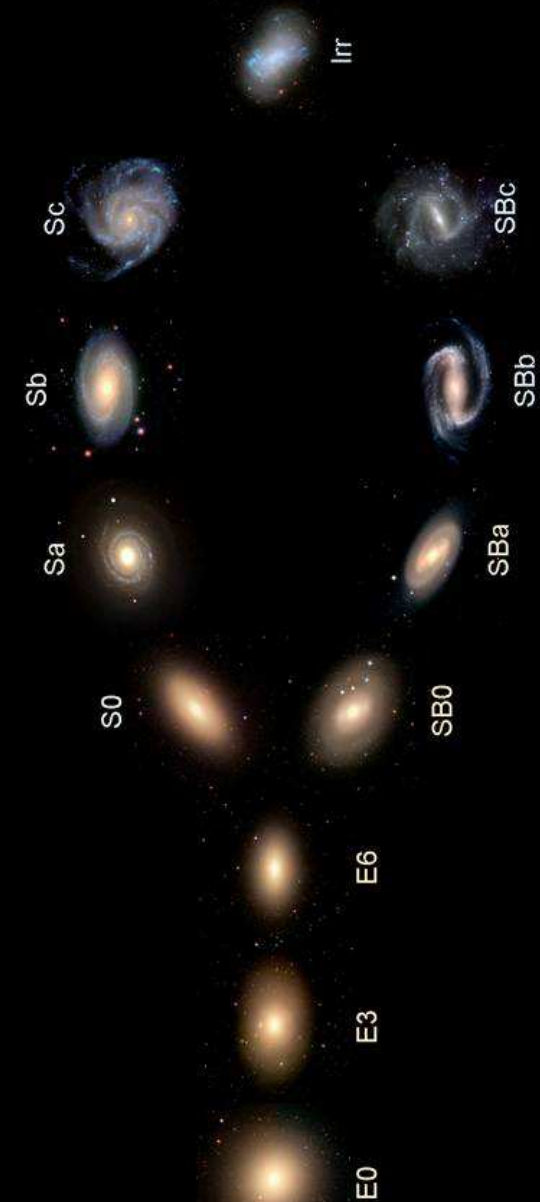


Espiral barrada

NGC1300

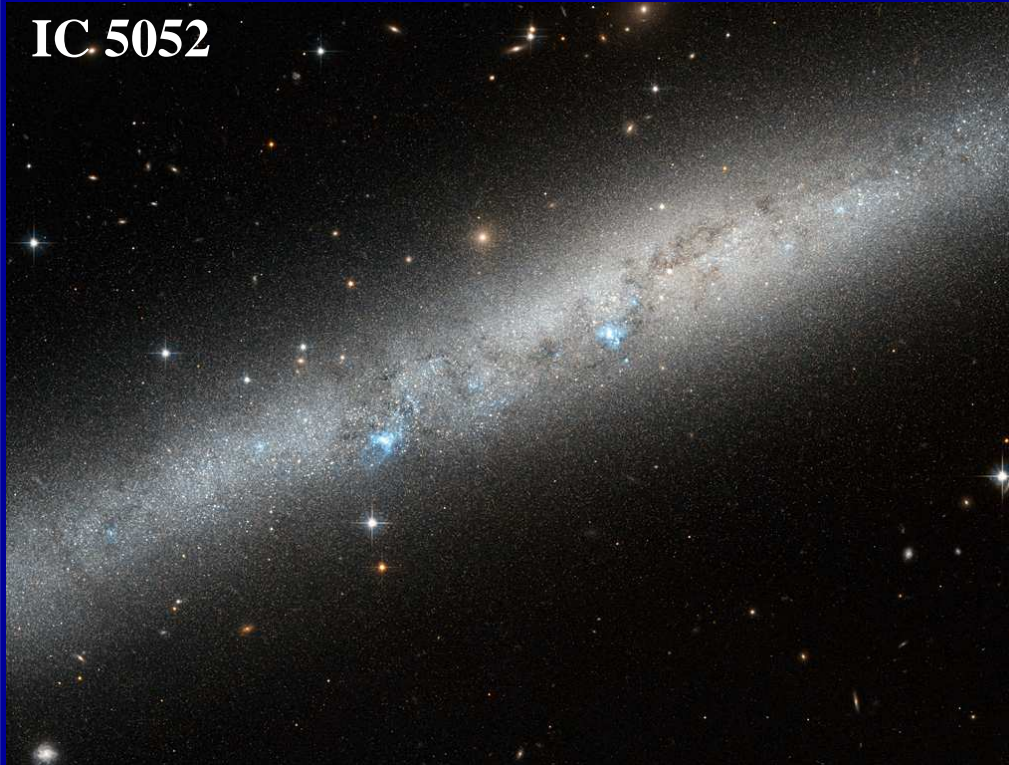


Hubble's Galaxy Classification Scheme

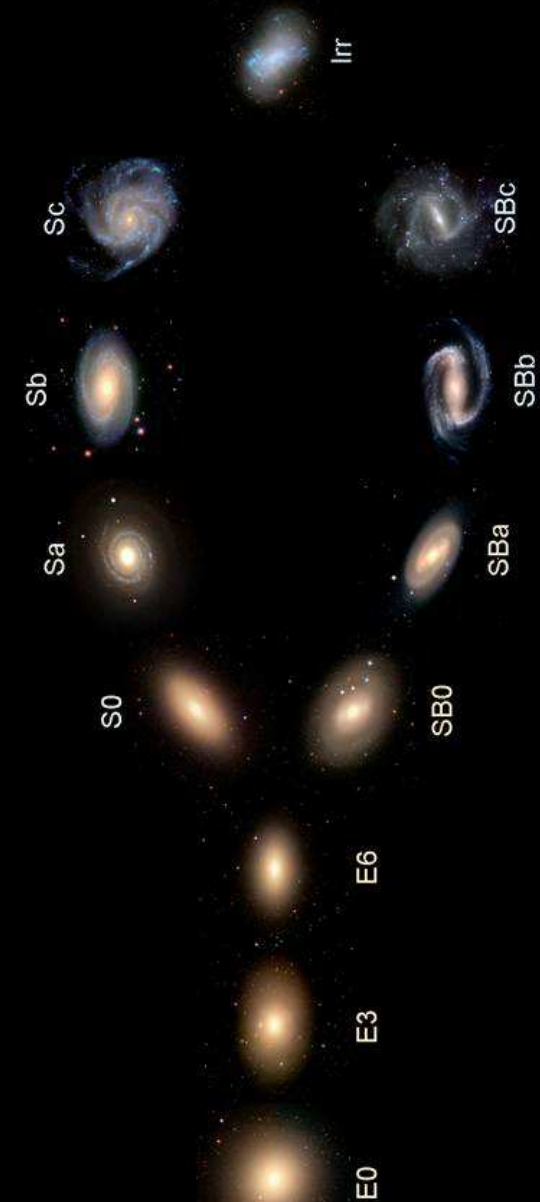




IC 5052



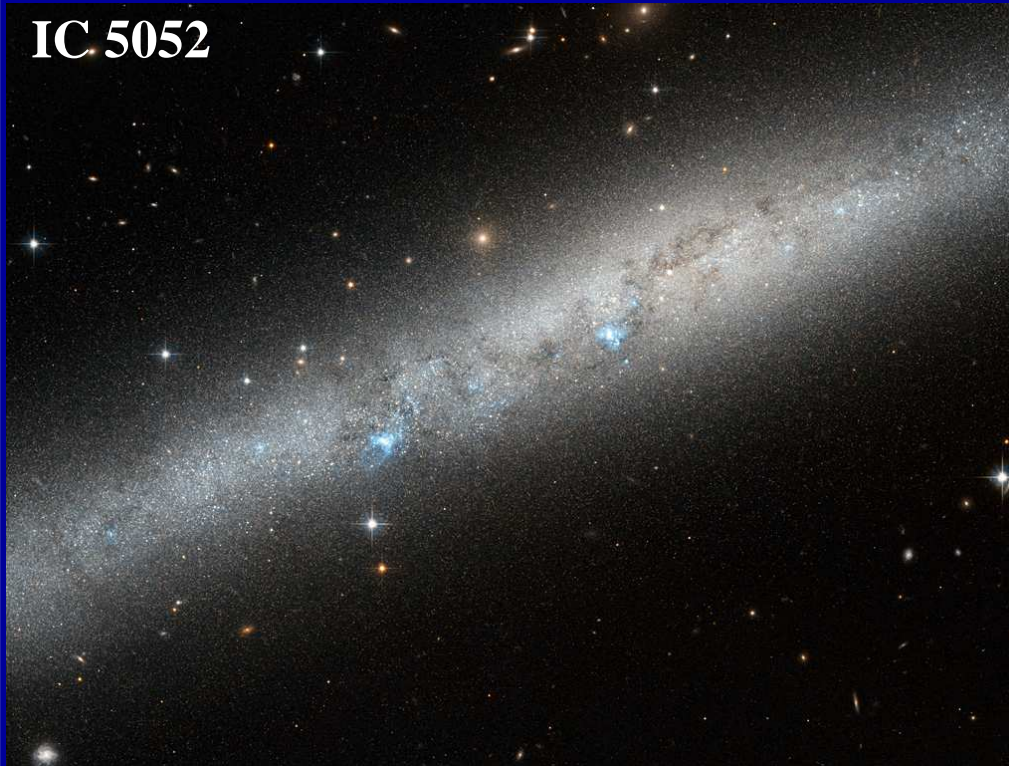
Hubble's Galaxy Classification Scheme



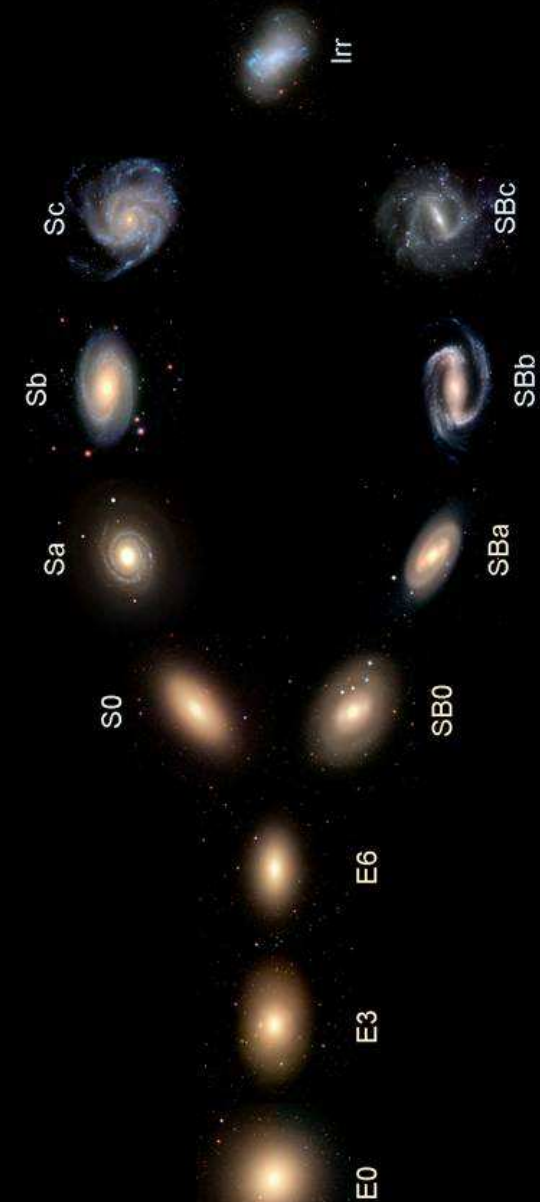


Espiral Barrada

IC 5052



Hubble's Galaxy Classification Scheme



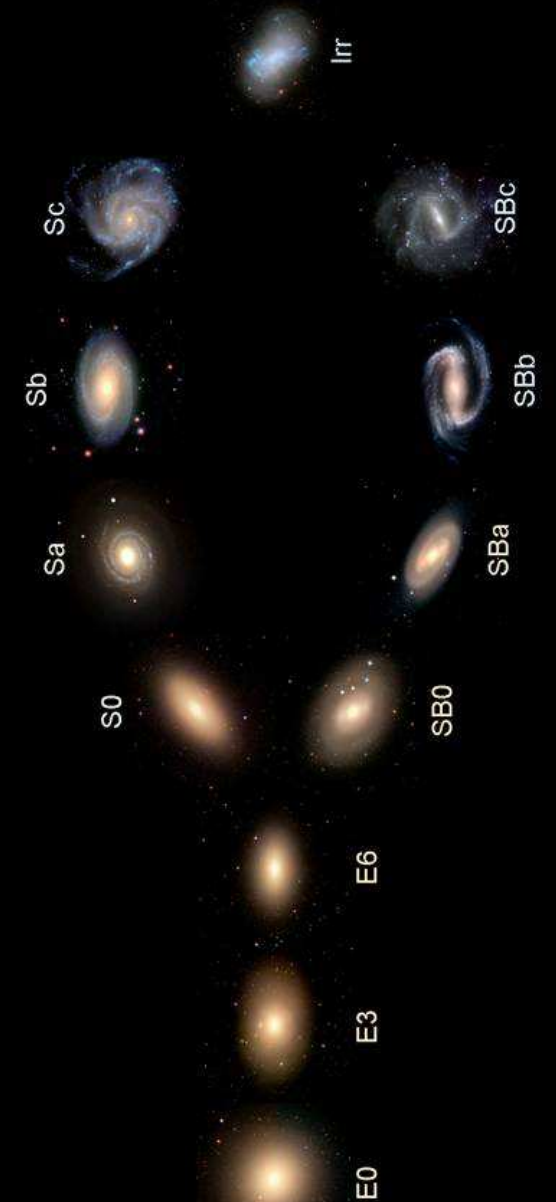


Grupo de Astronomia

NGC 2207 and IC 2163



Hubble's Galaxy Classification Scheme



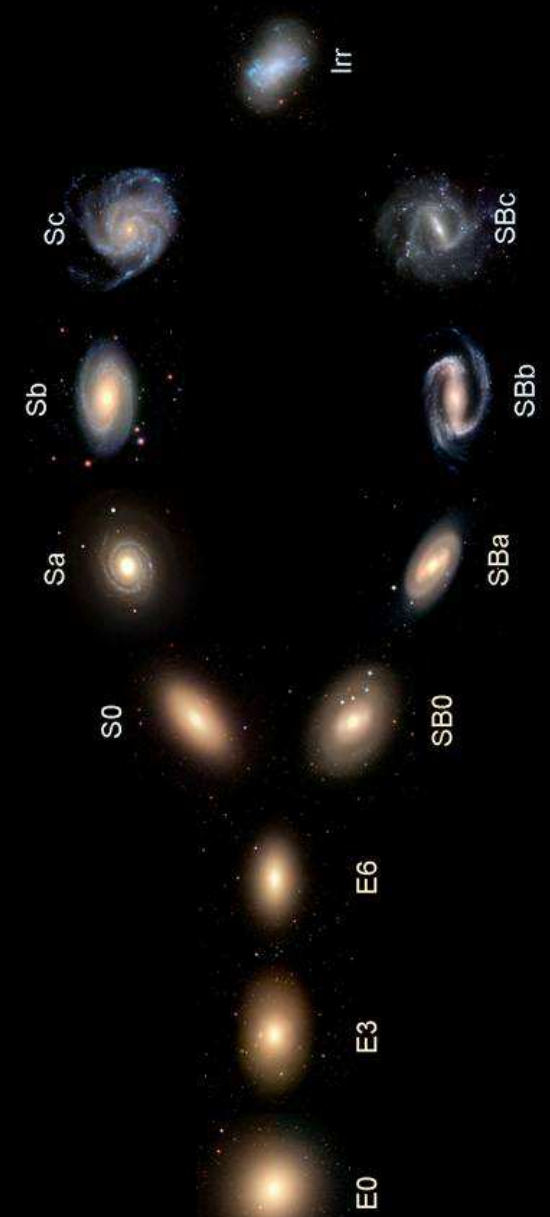


NGC 2207 and IC 2163



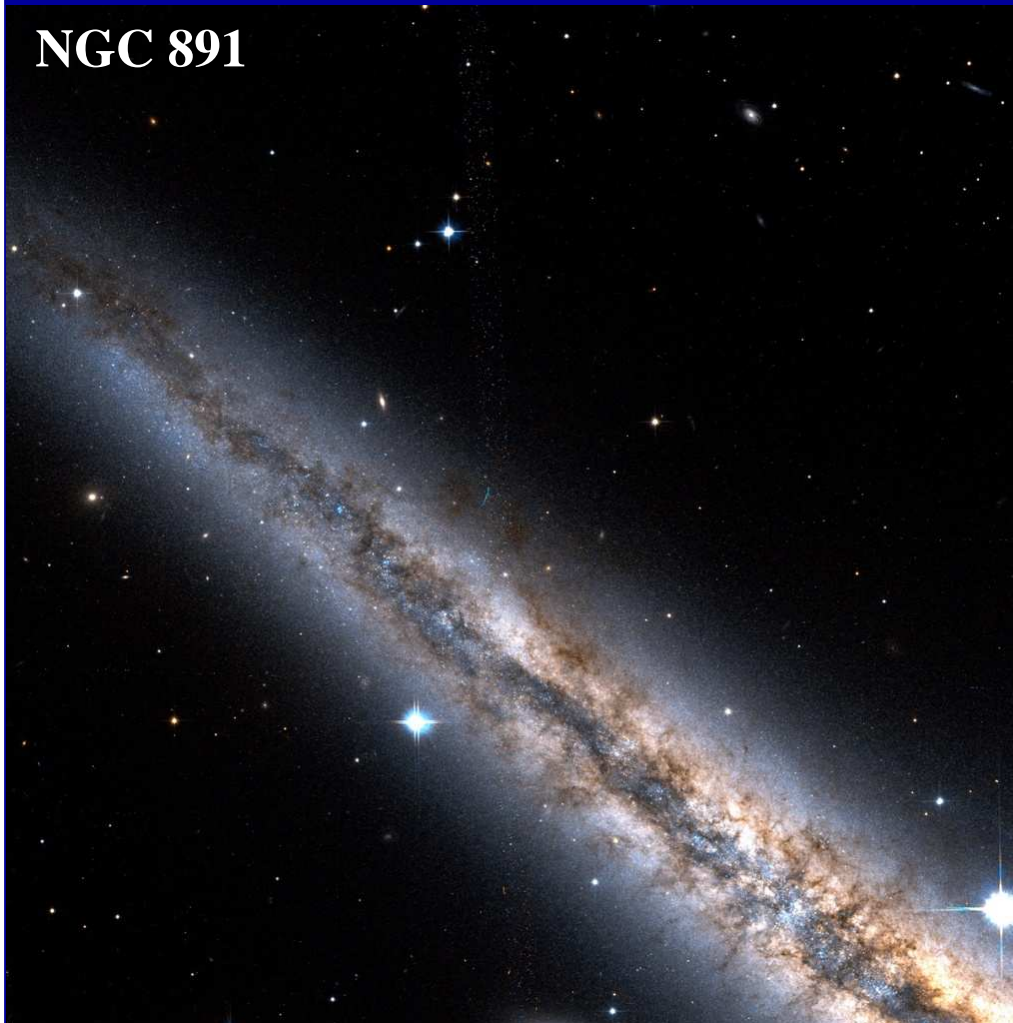
Um par de Galáxias Espirais em colisão

Hubble's Galaxy Classification Scheme

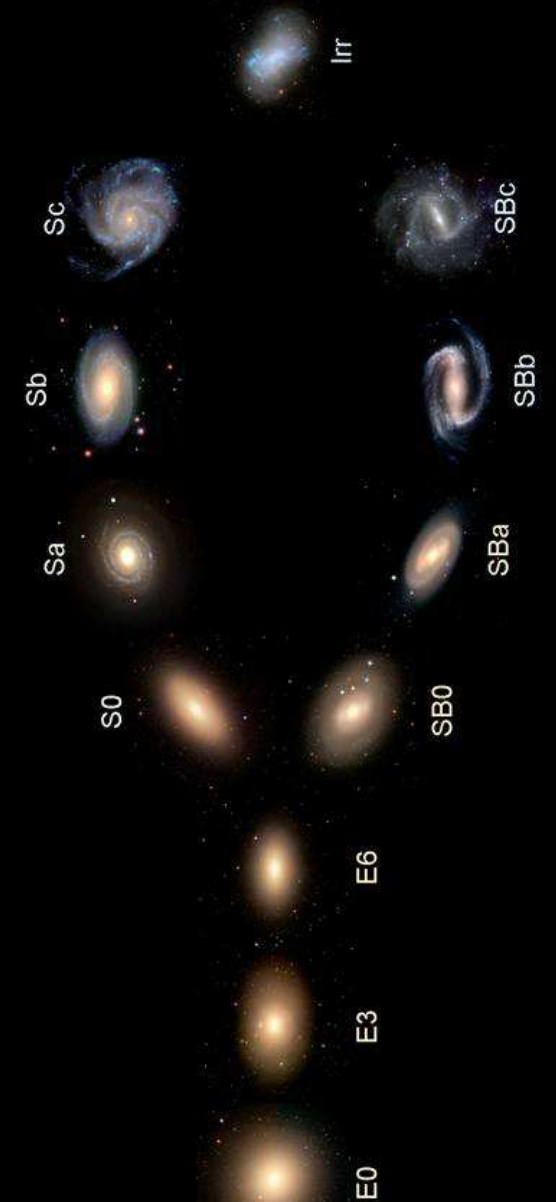




NGC 891



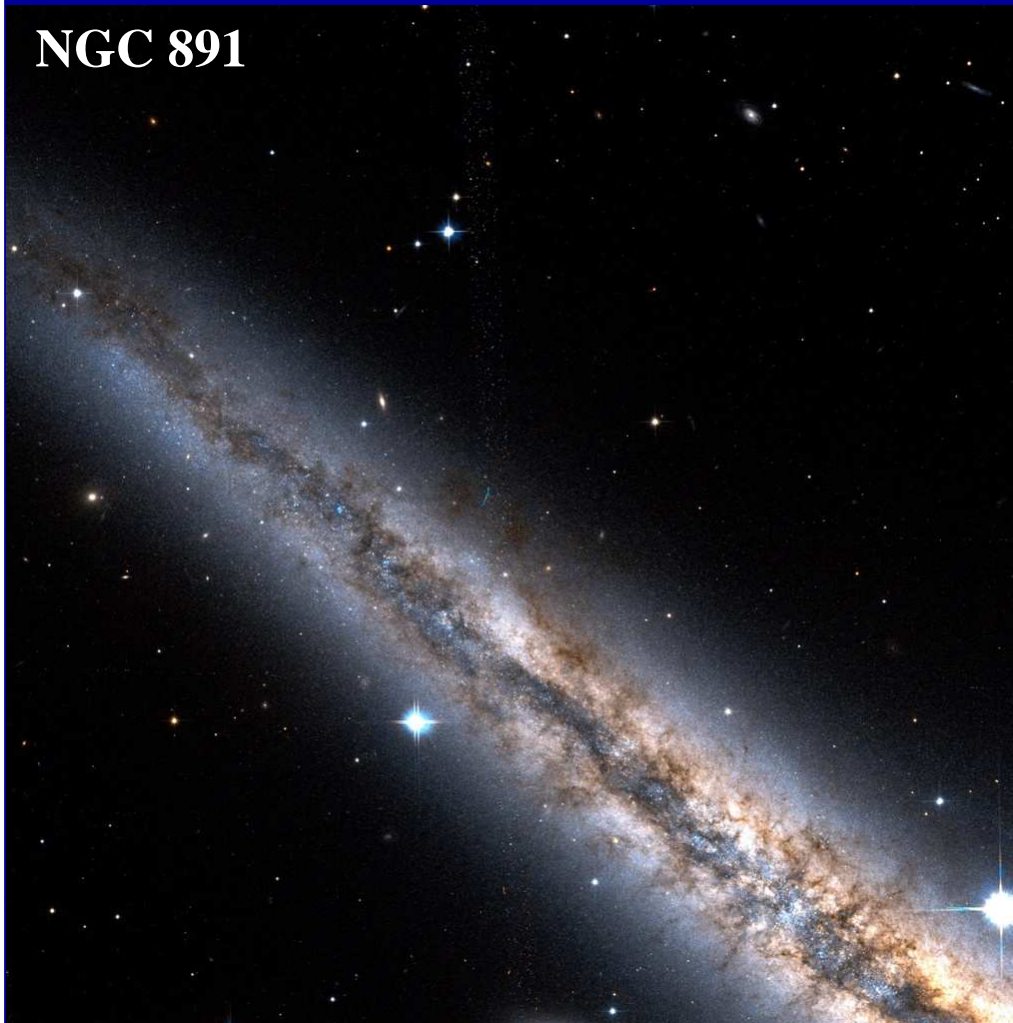
Hubble's Galaxy Classification Scheme



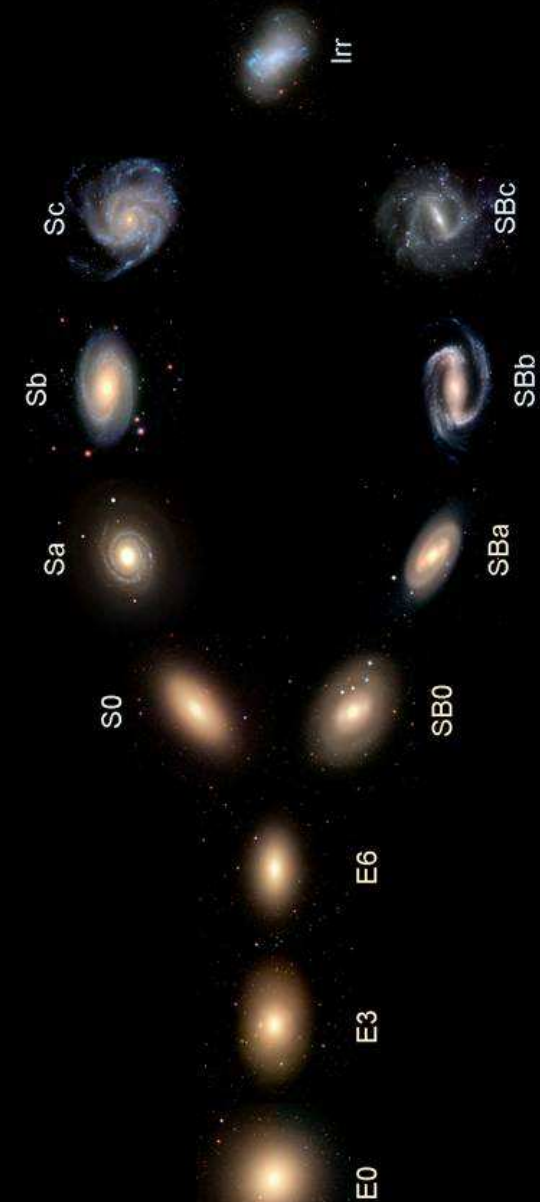


Espiral Barrada

NGC 891

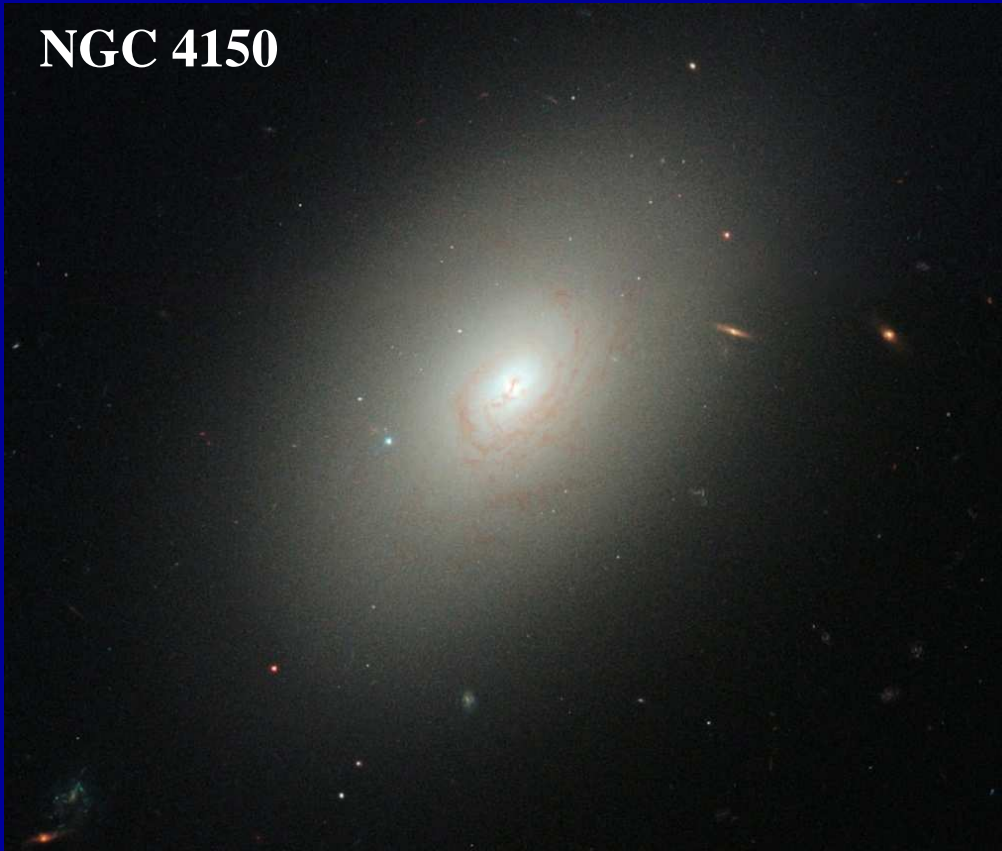


Hubble's Galaxy Classification Scheme

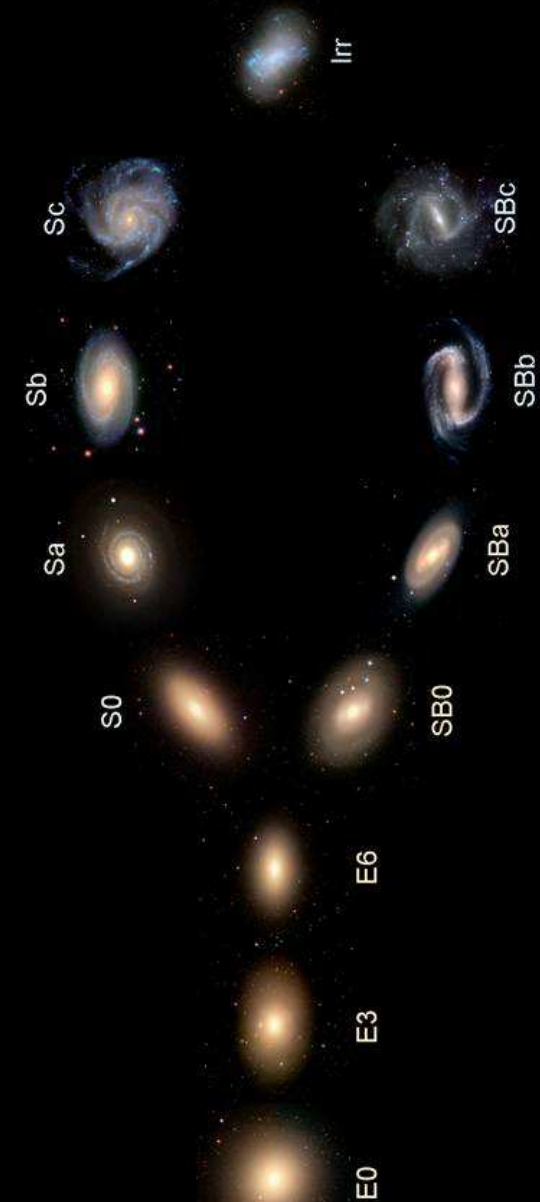




NGC 4150



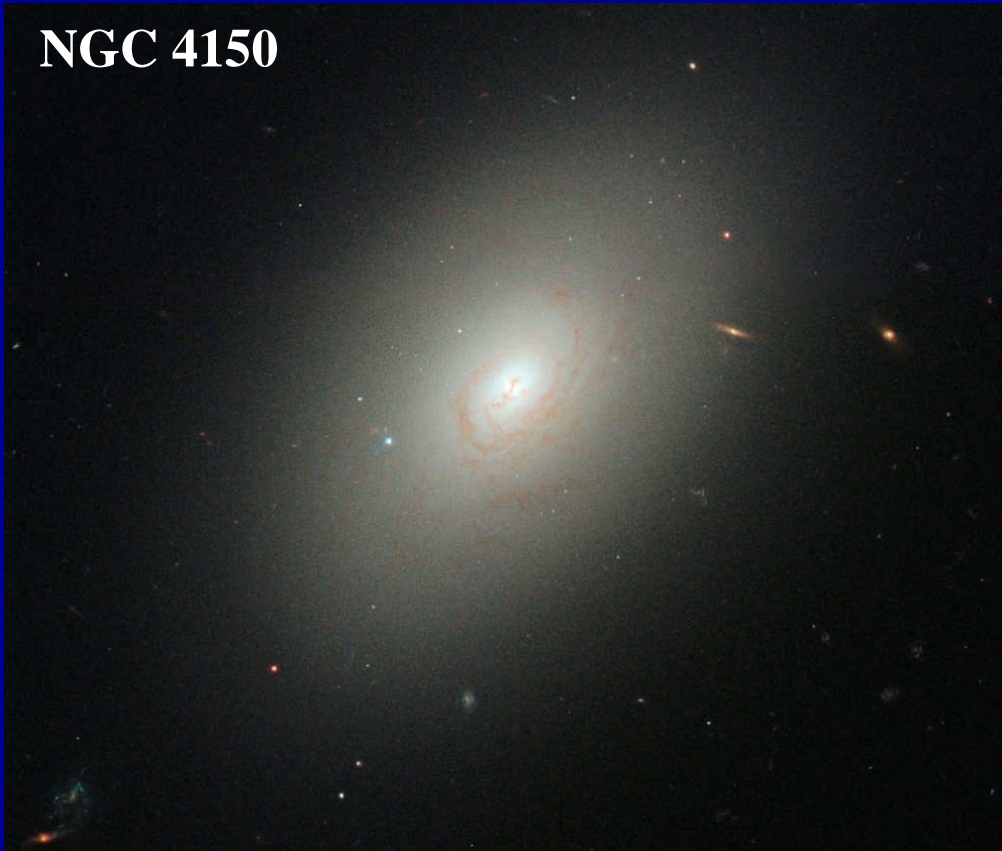
Hubble's Galaxy Classification Scheme



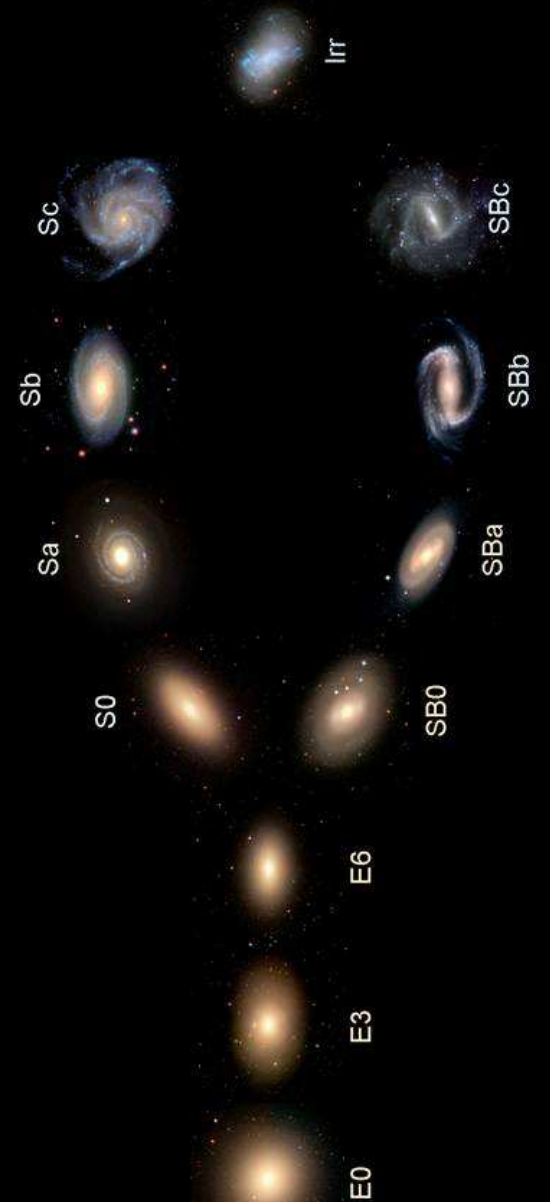


Elíptica

NGC 4150

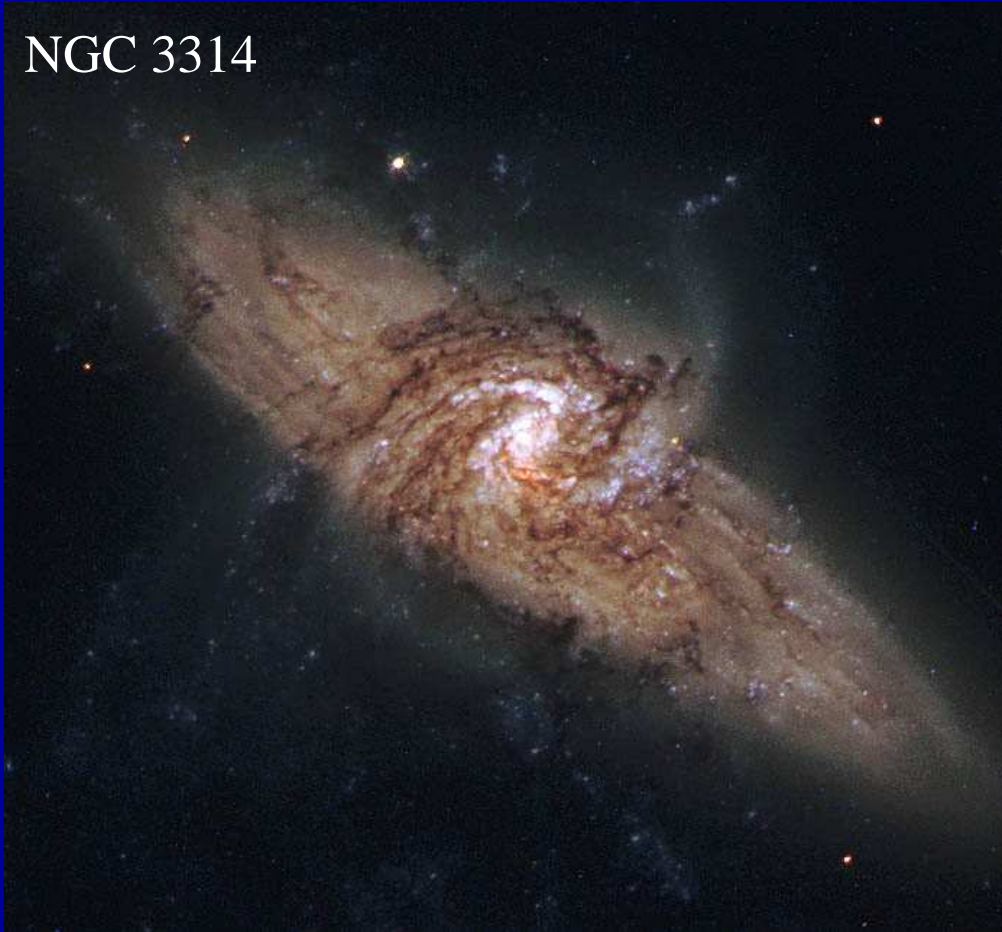


Hubble's Galaxy Classification Scheme

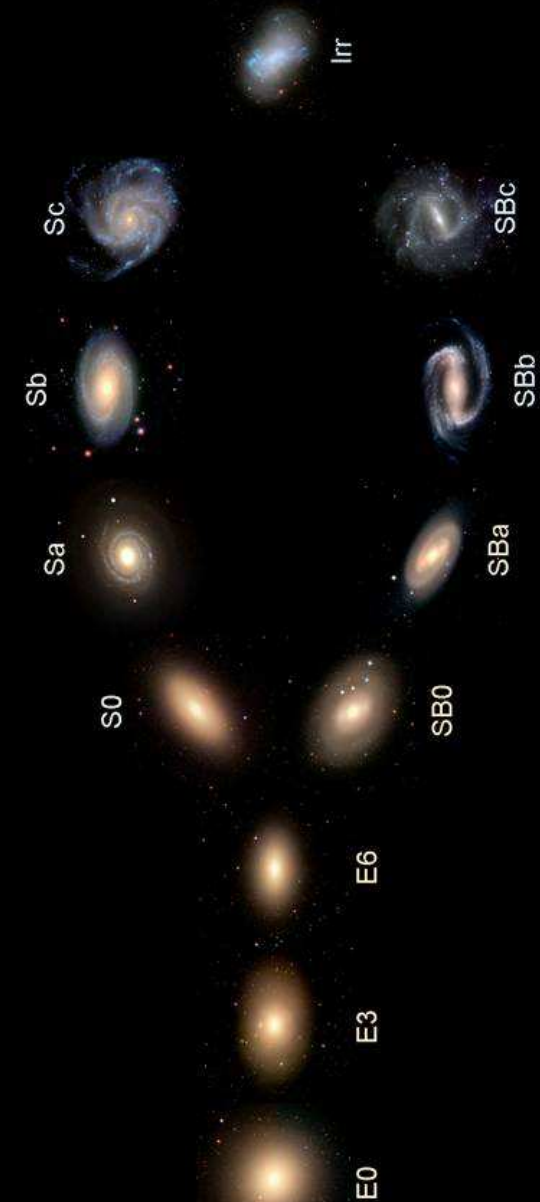




NGC 3314



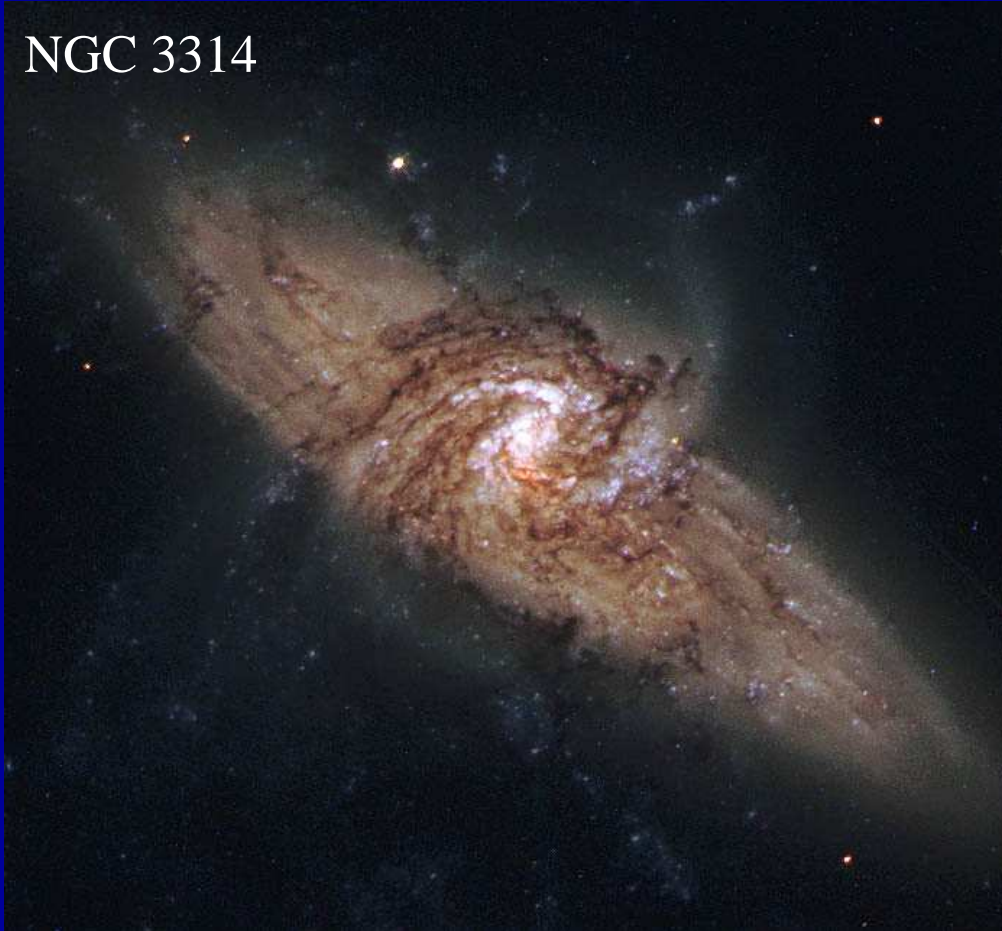
Hubble's Galaxy Classification Scheme



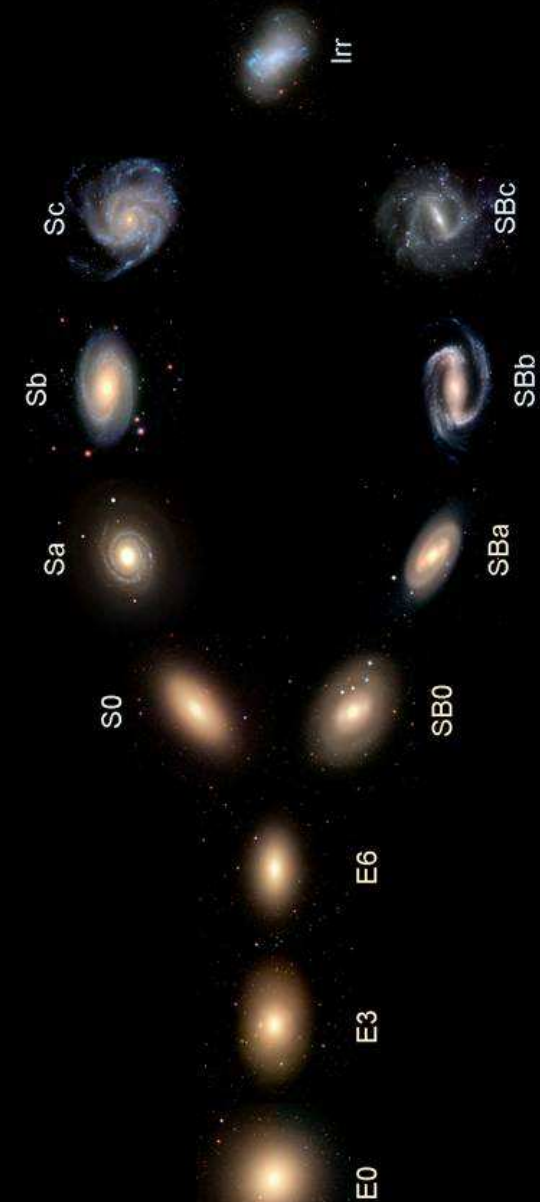


Duas espirais alinhadas por coincidência

NGC 3314

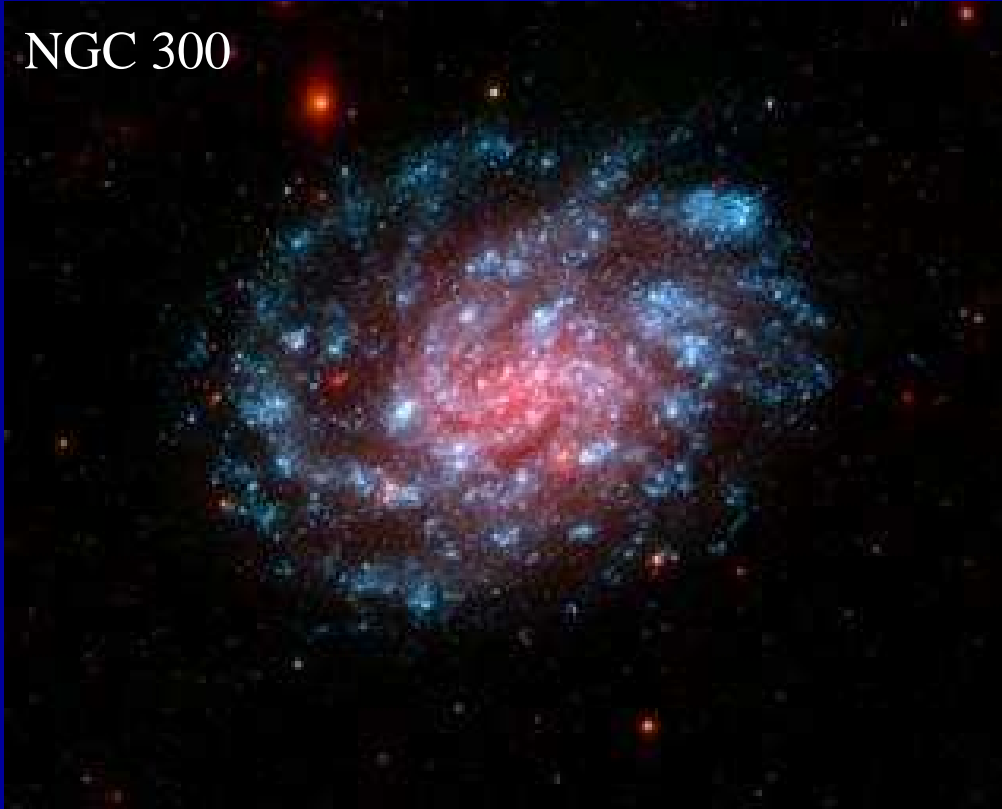


Hubble's Galaxy Classification Scheme

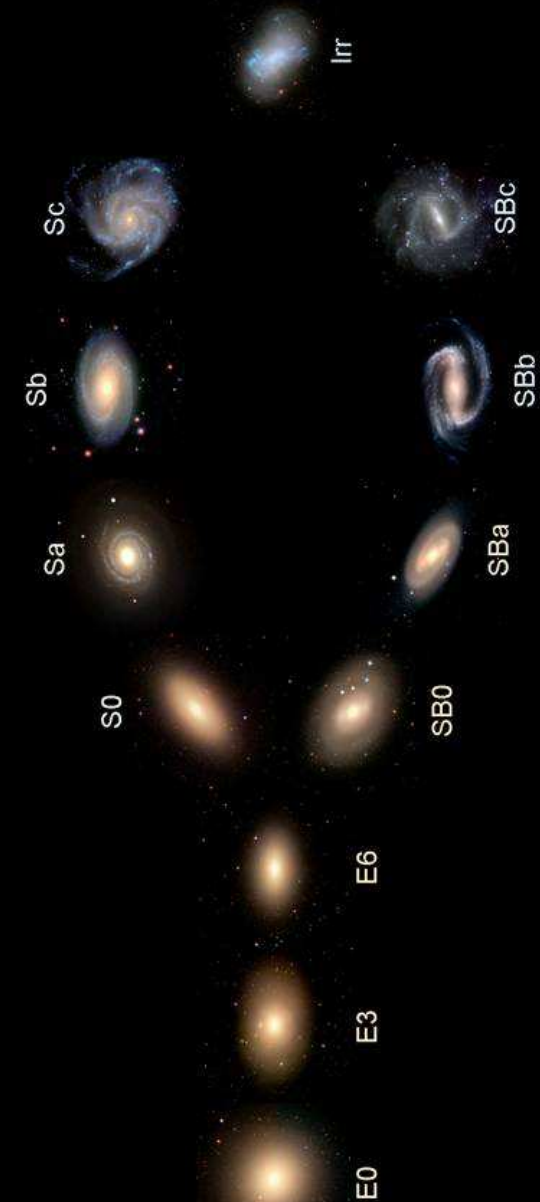




NGC 300



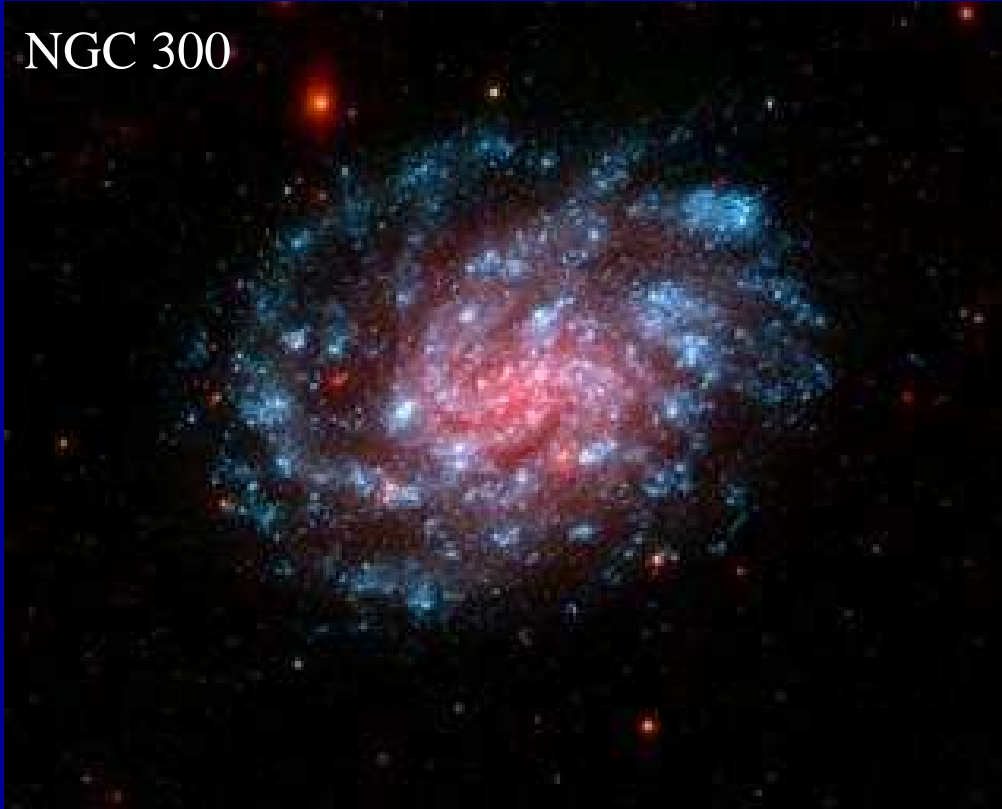
Hubble's Galaxy Classification Scheme



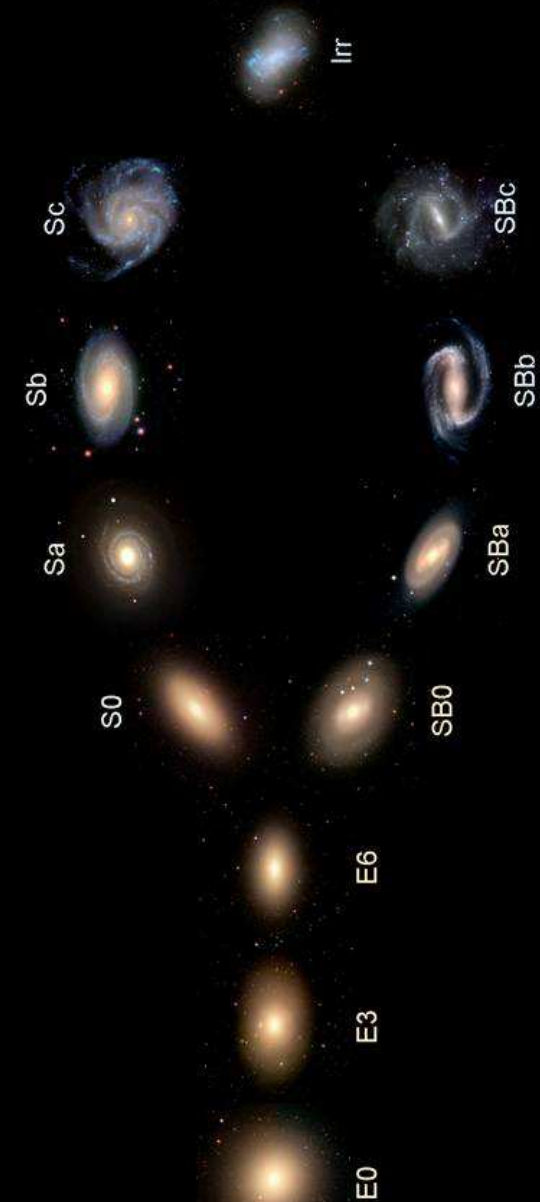


Espiral Nova

NGC 300

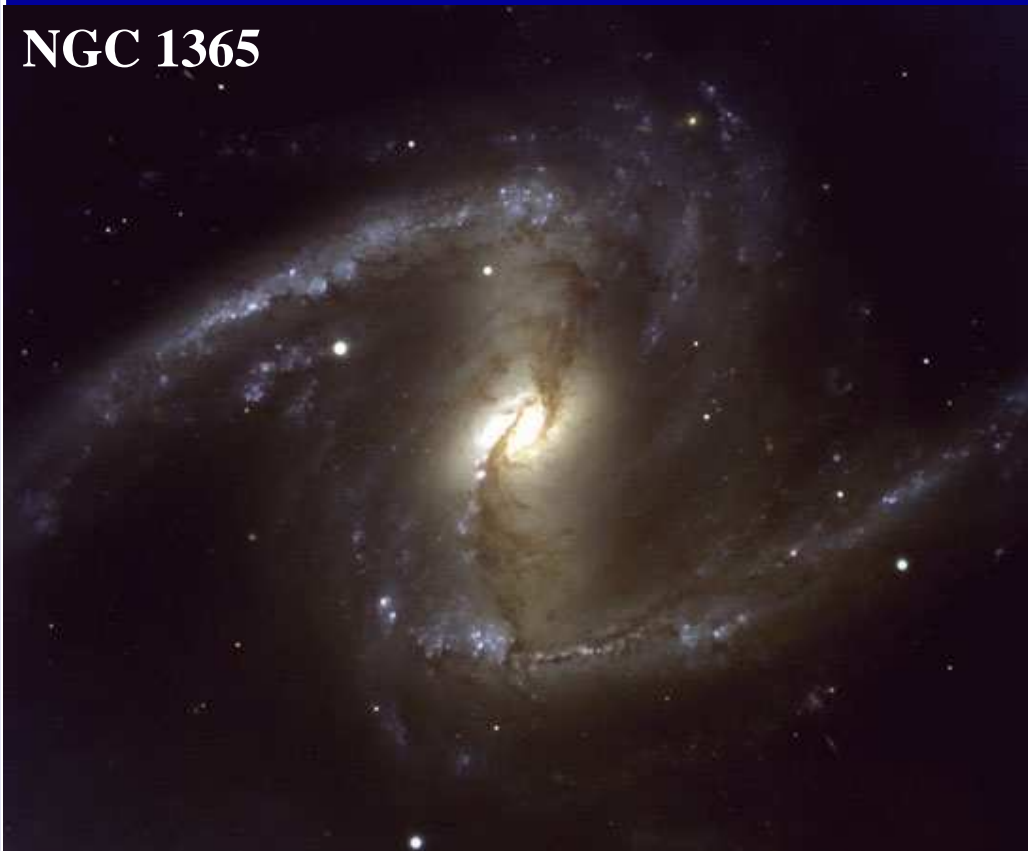


Hubble's Galaxy Classification Scheme

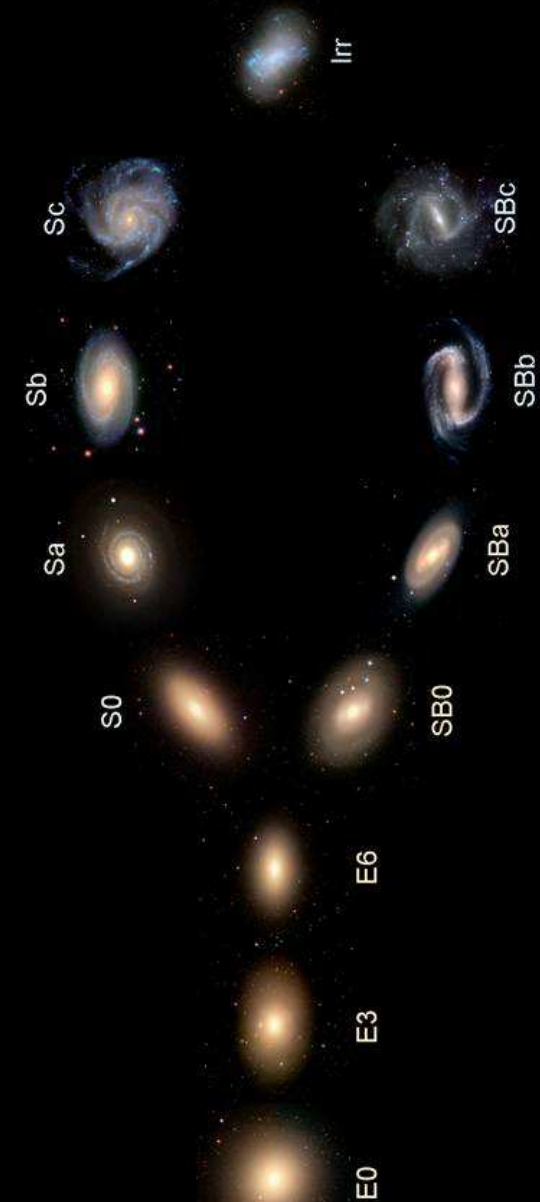




NGC 1365



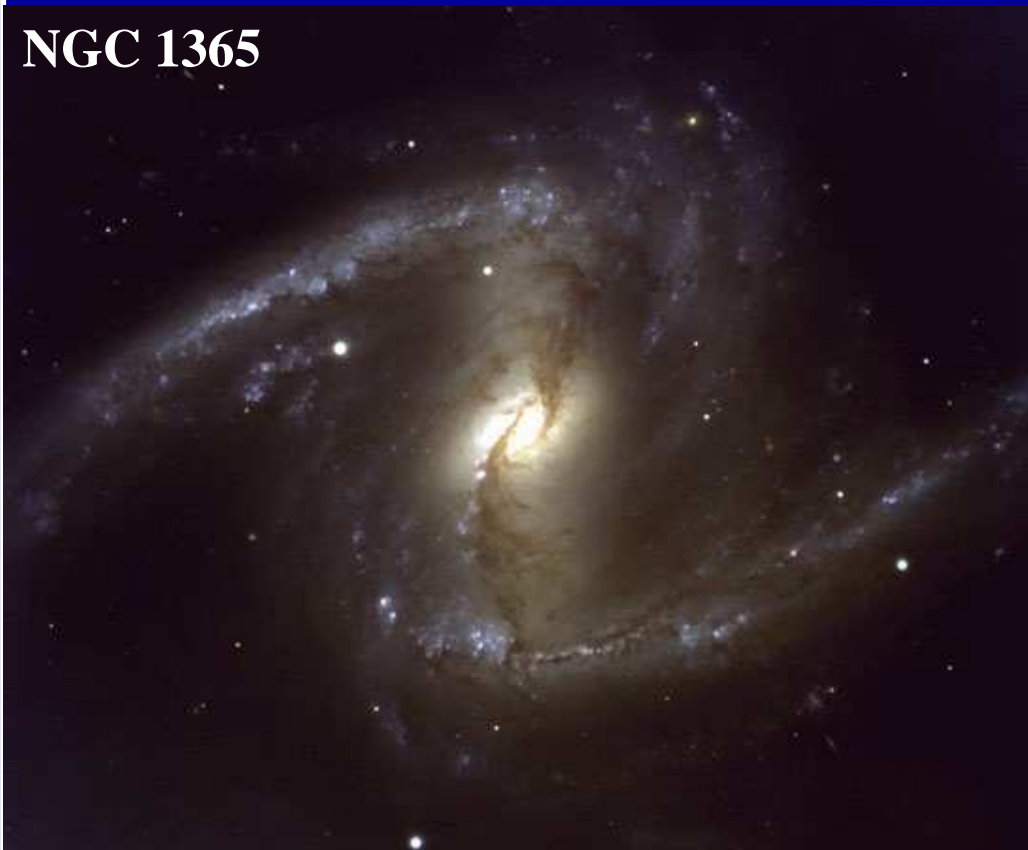
Hubble's Galaxy Classification Scheme



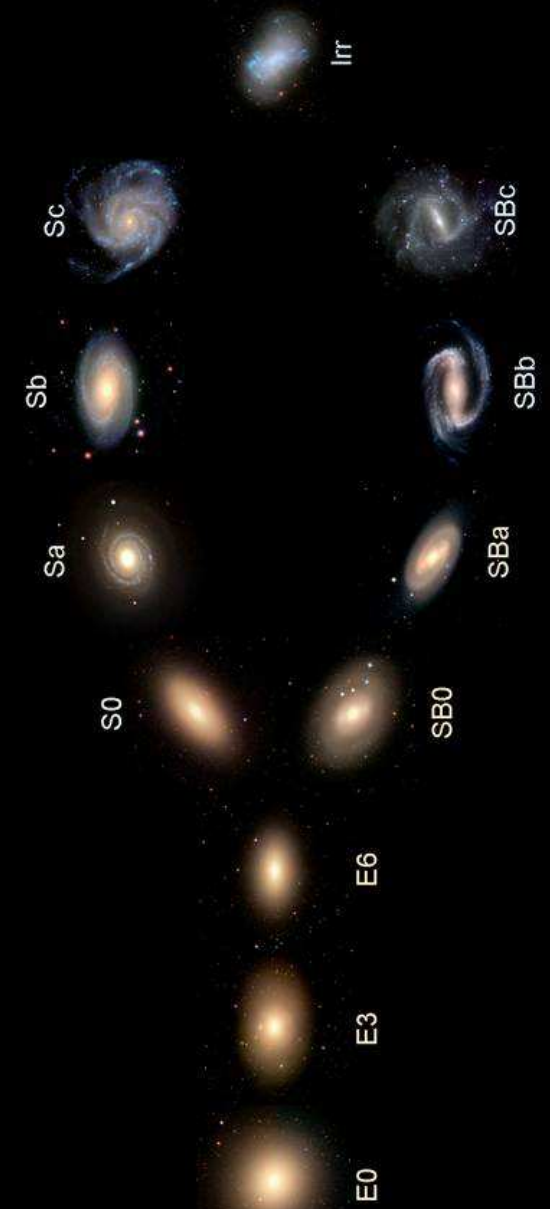


Espiral barrada

NGC 1365



Hubble's Galaxy Classification Scheme

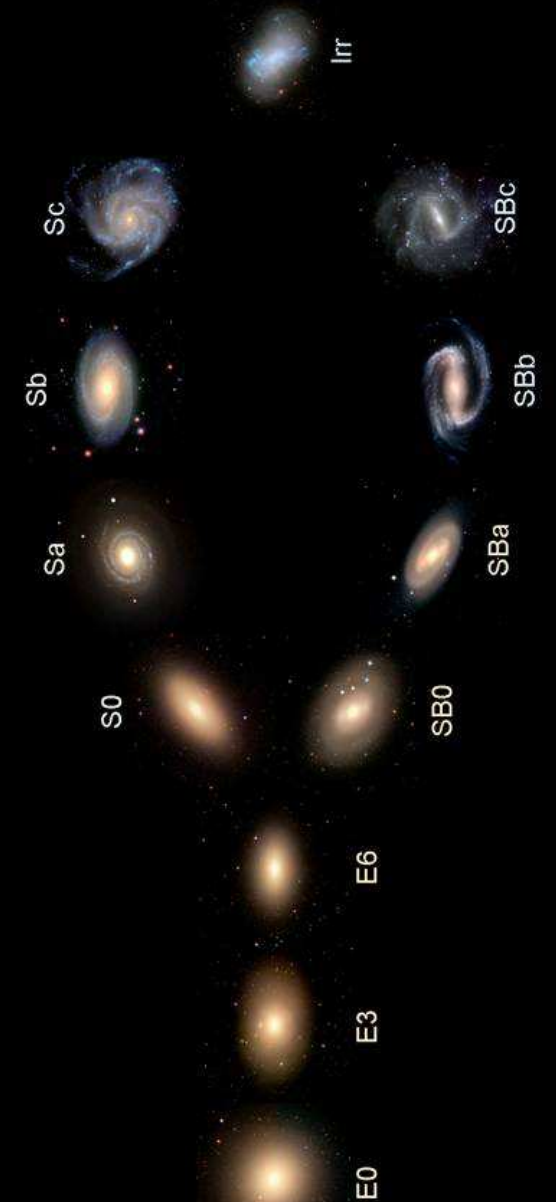




NGC 4594 (Galáxia do Sombrero)



Hubble's Galaxy Classification Scheme



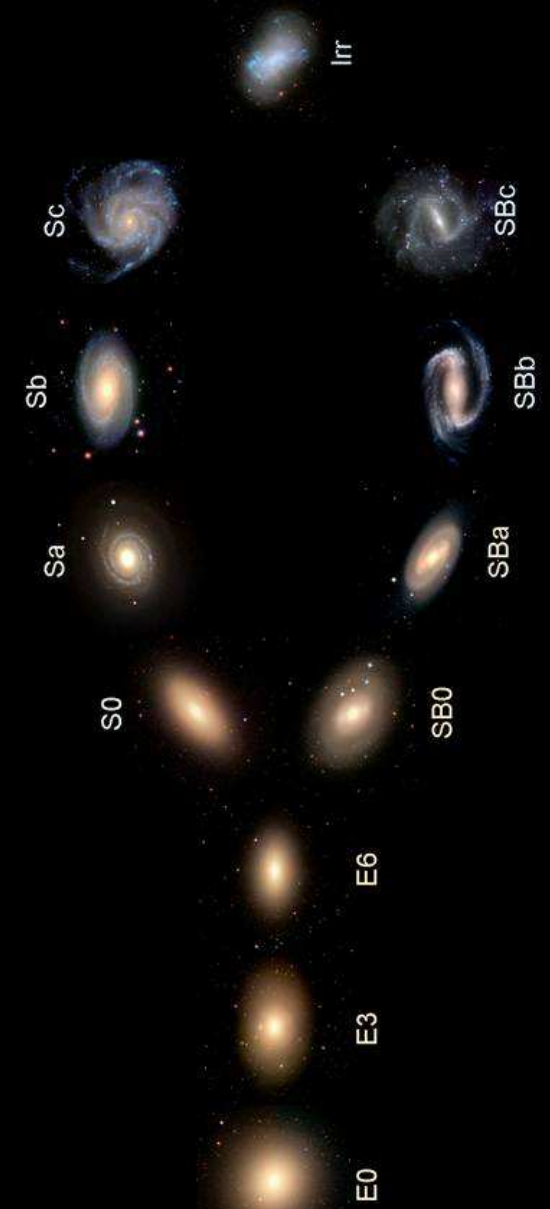


Antes Elíptica, agora sabe-se que são, de facto, duas Galáxias

NGC 4594 (Galáxia do Sombrero)



Hubble's Galaxy Classification Scheme

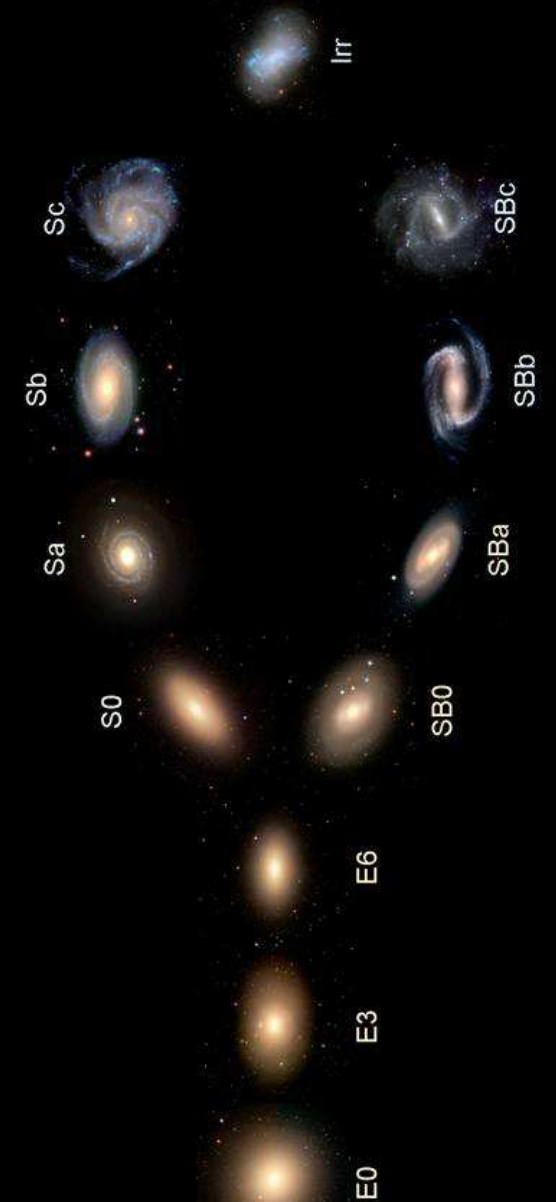




NGC 2683



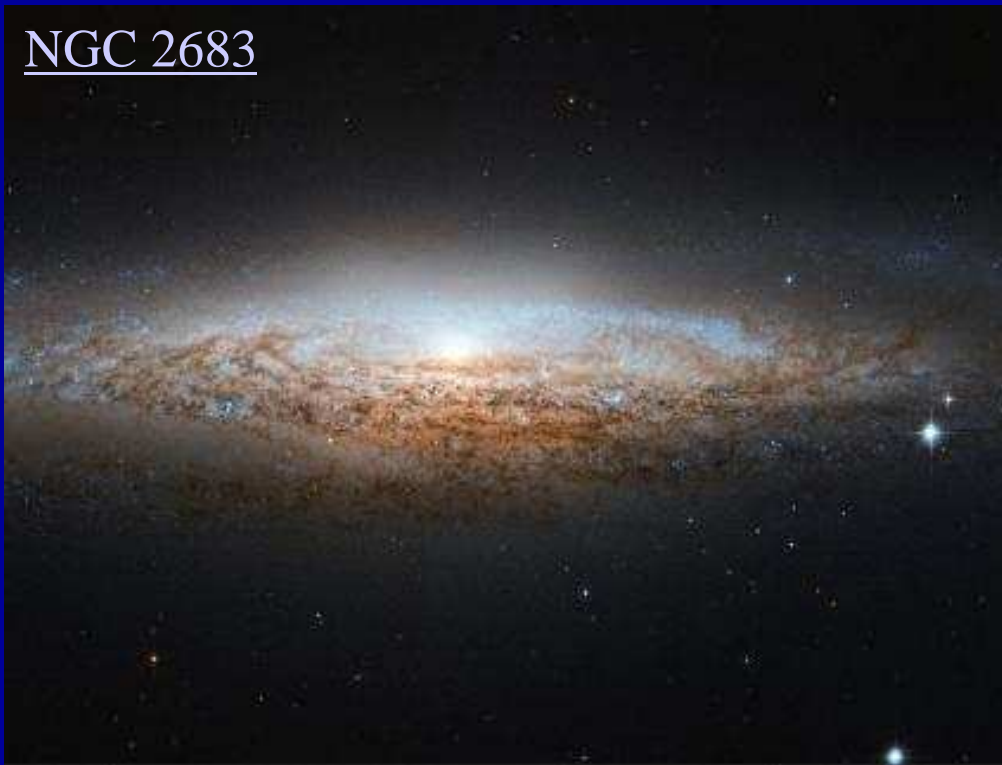
Hubble's Galaxy Classification Scheme



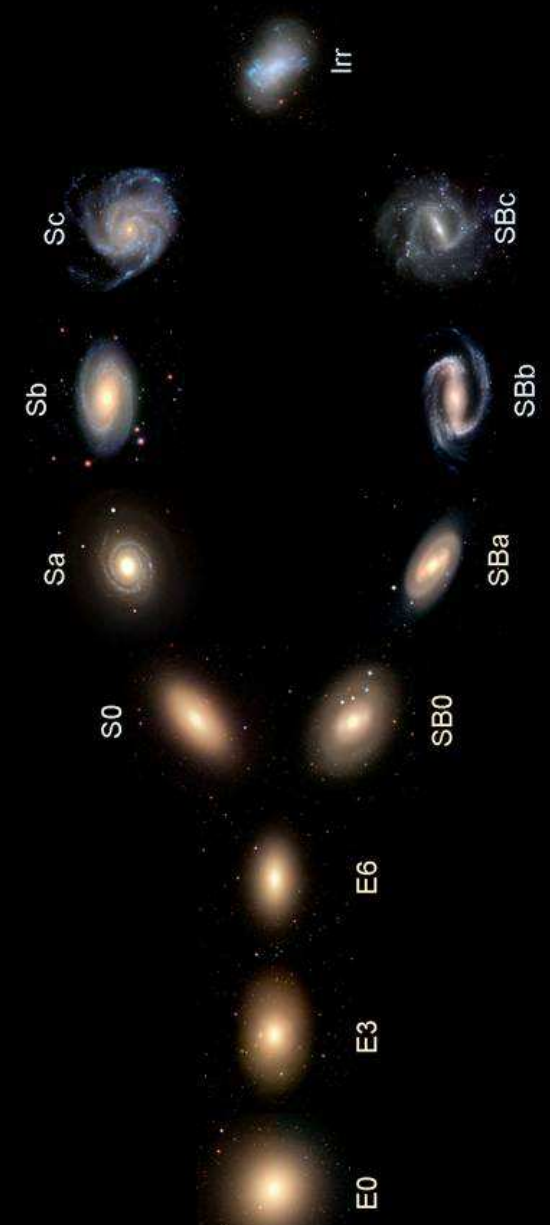


Espiral vista de lado

NGC 2683

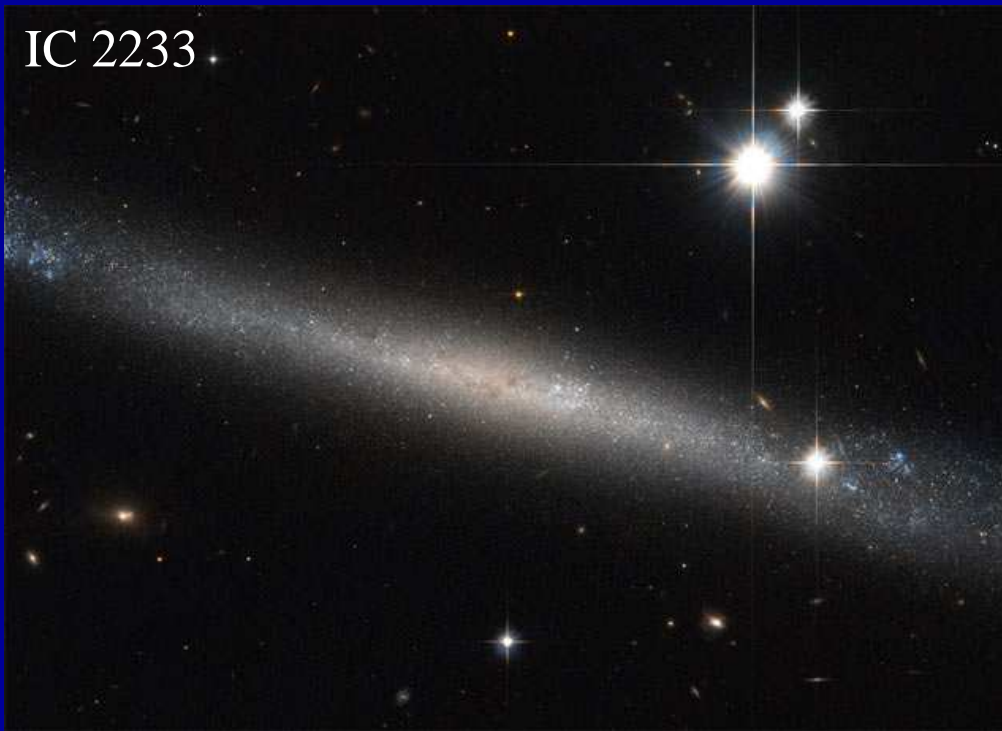


Hubble's Galaxy Classification Scheme

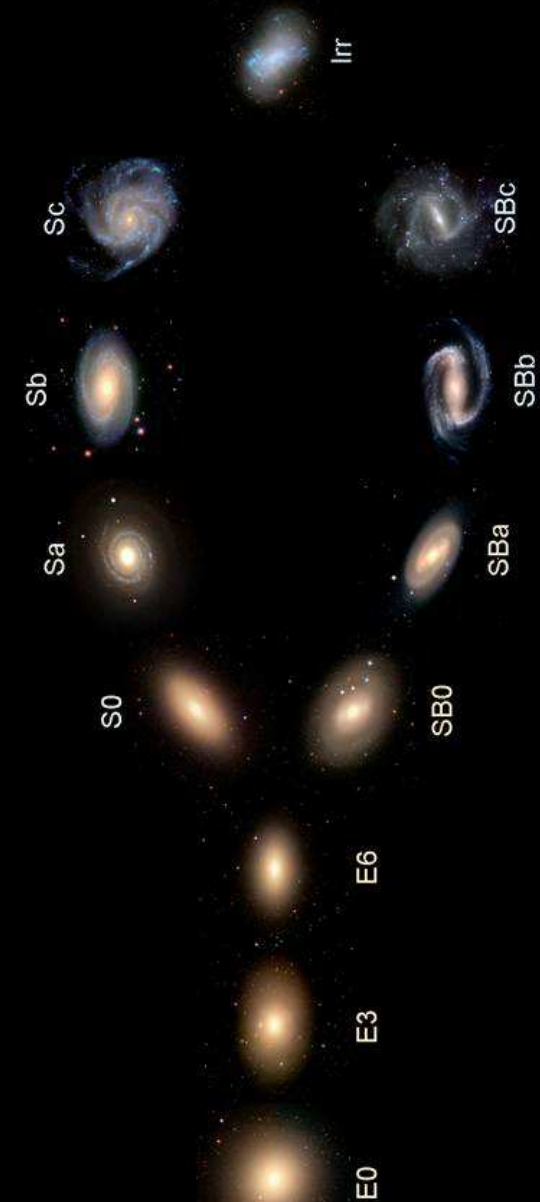




IC 2233



Hubble's Galaxy Classification Scheme



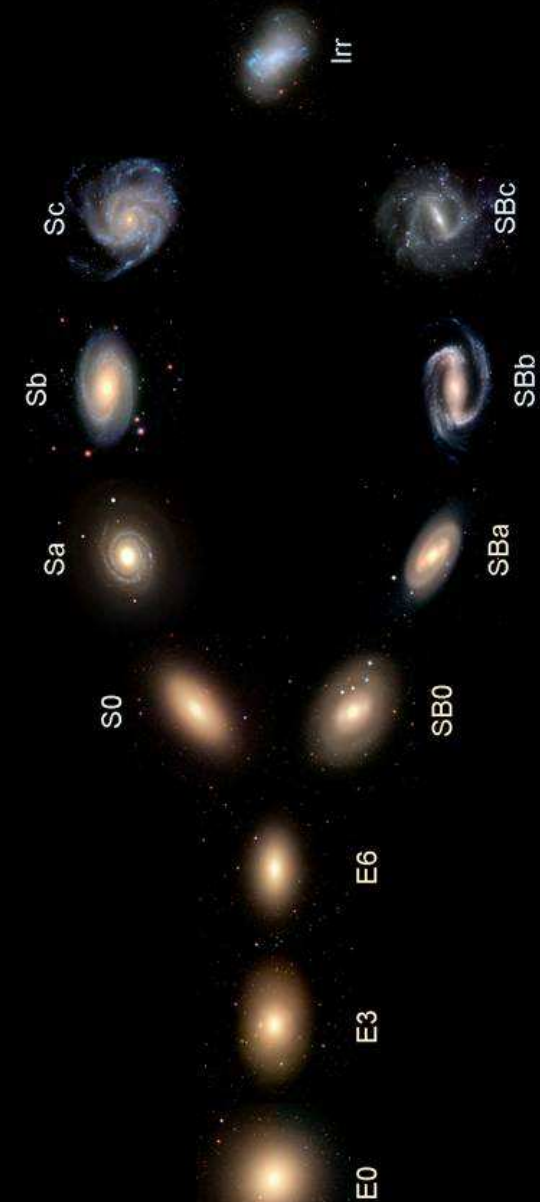


Espiral superfina:
diâmetro pelo menos **10** vezes a
espessura

IC 2233



Hubble's Galaxy Classification Scheme

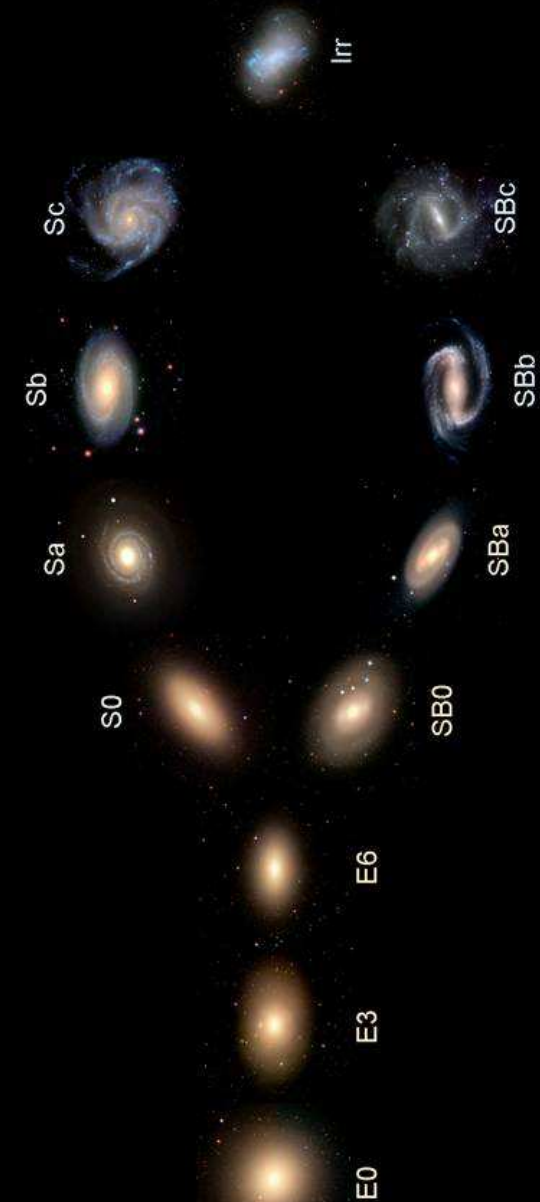




NGC 55



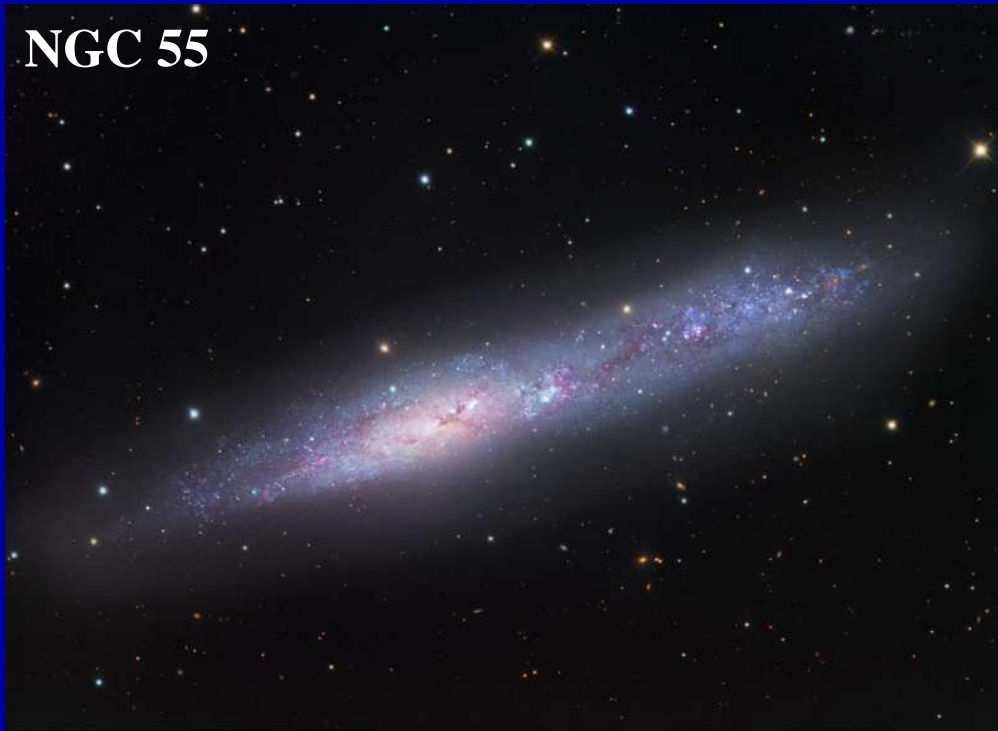
Hubble's Galaxy Classification Scheme



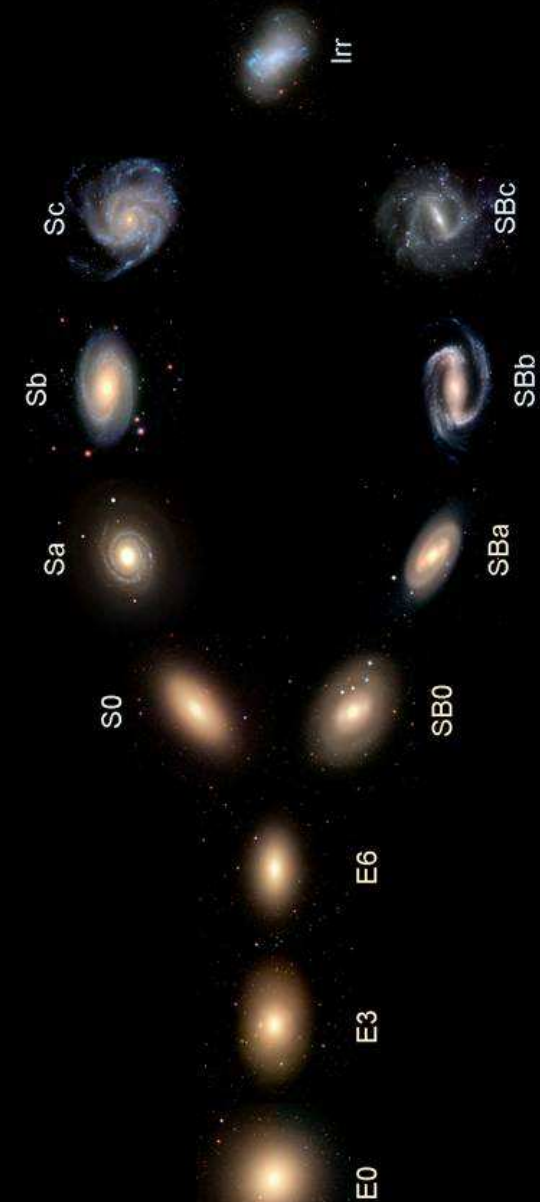


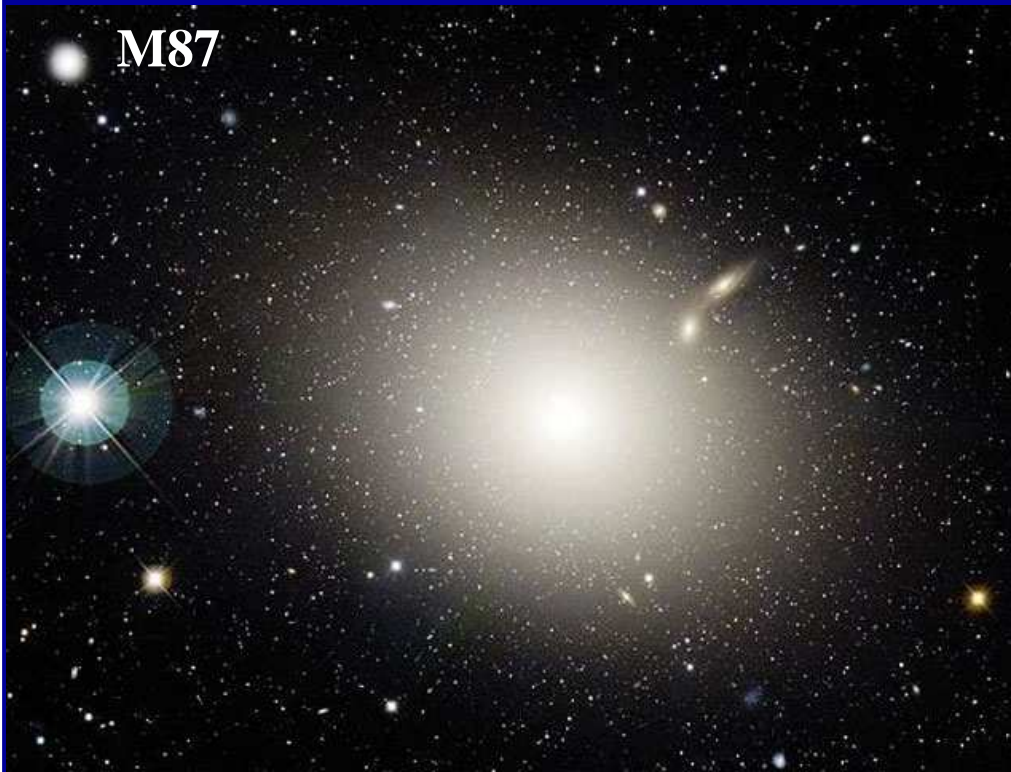
Irregular

NGC 55

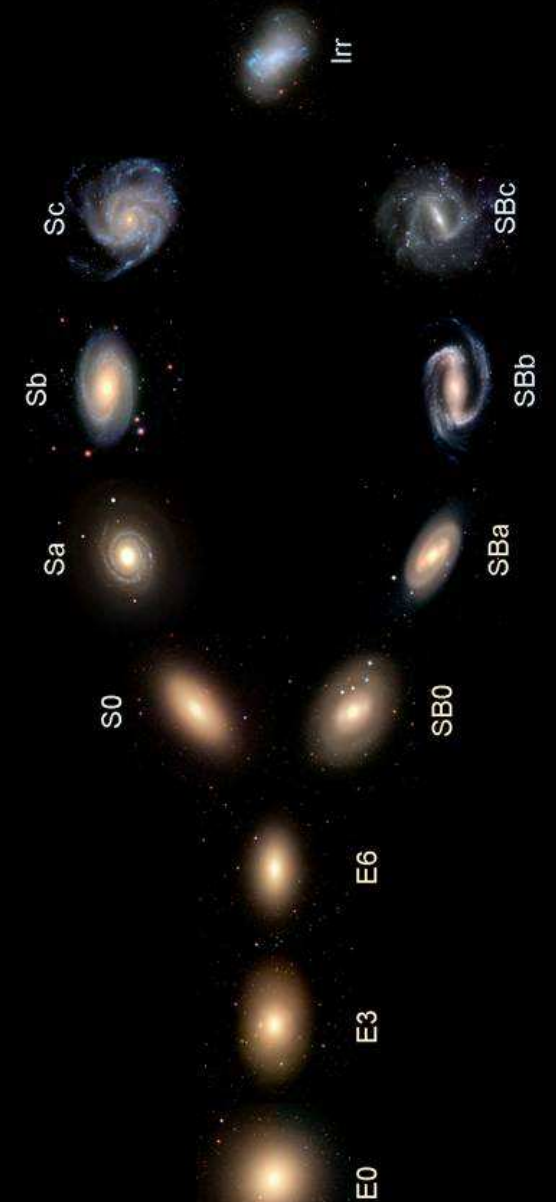


Hubble's Galaxy Classification Scheme



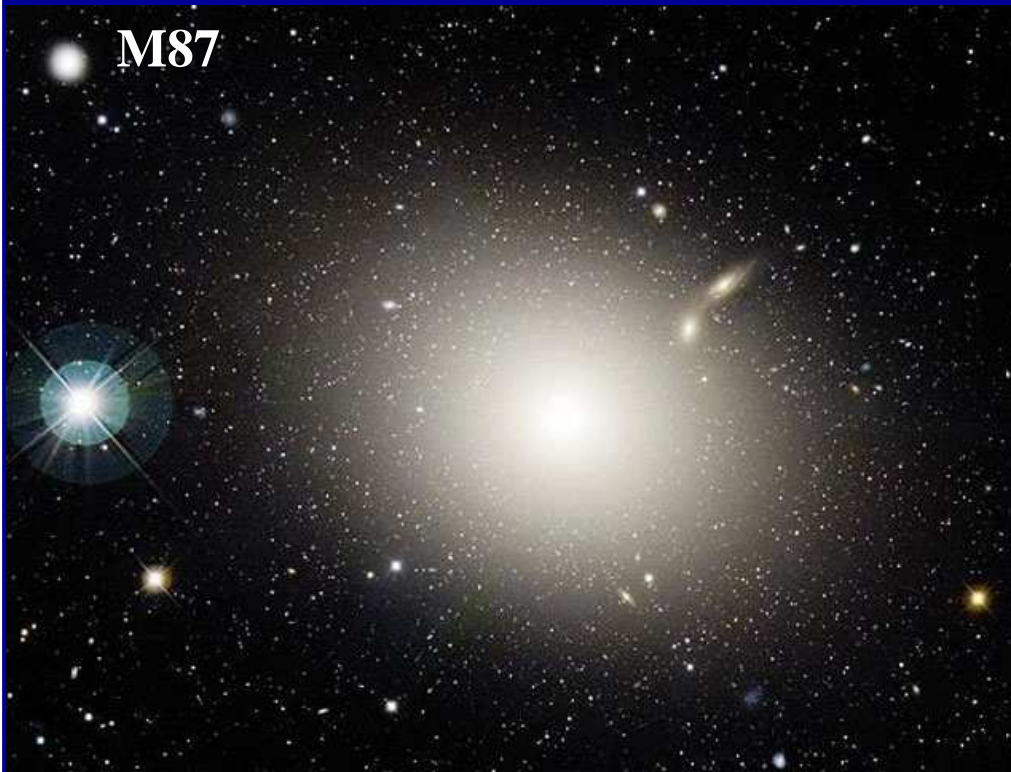


Hubble's Galaxy Classification Scheme

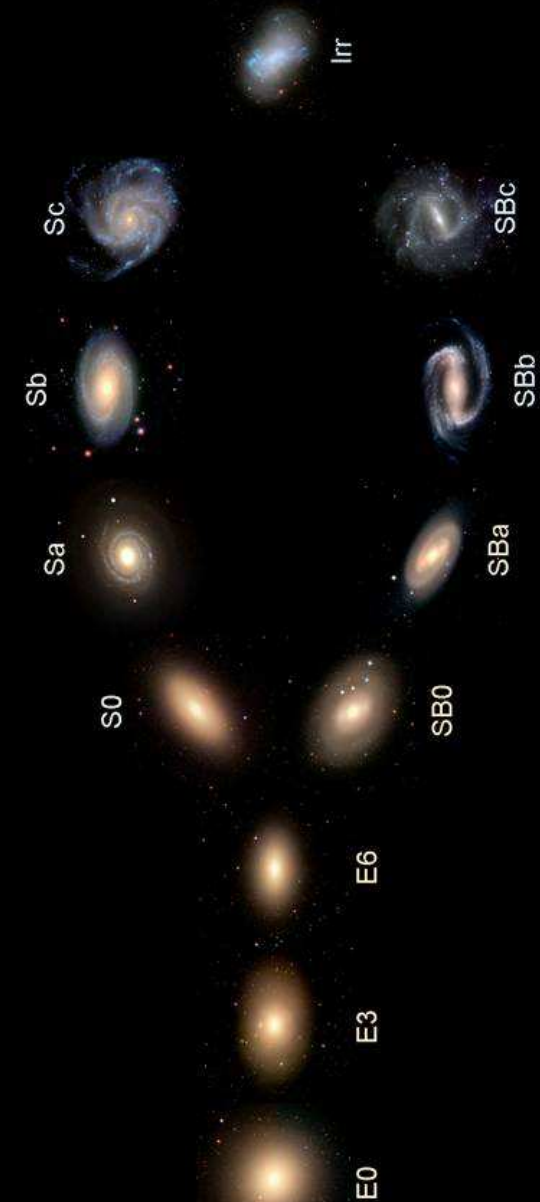




Elíptica

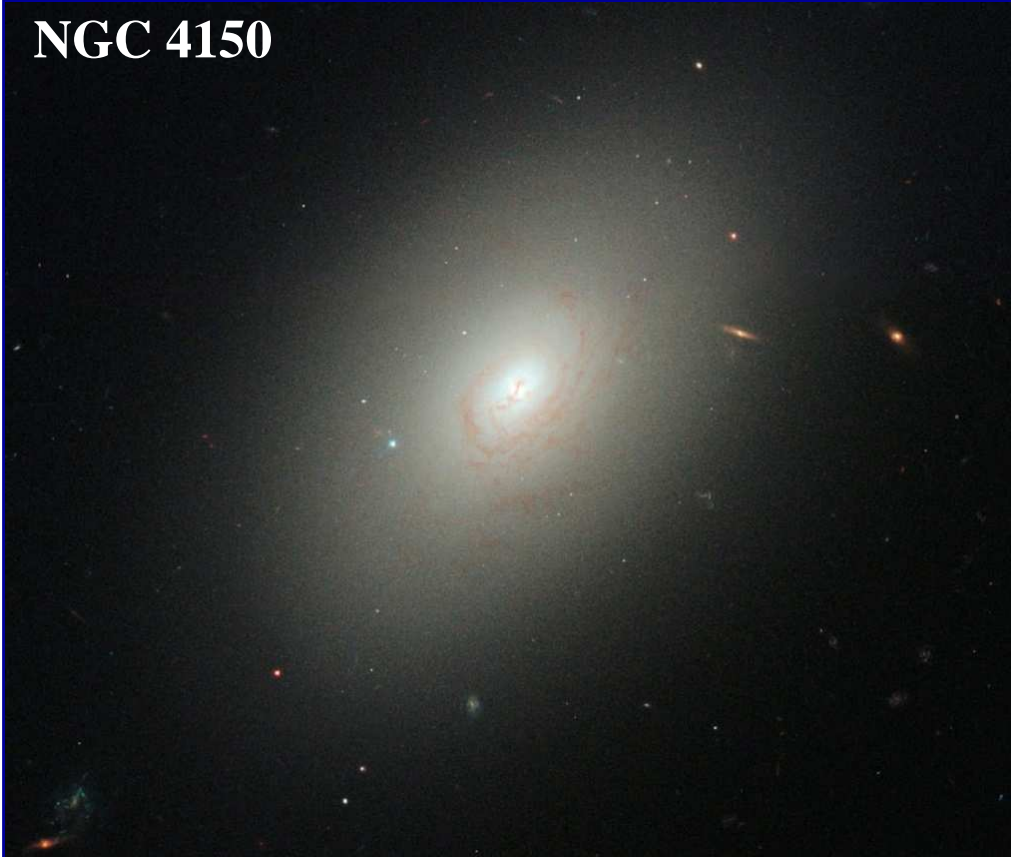


Hubble's Galaxy Classification Scheme

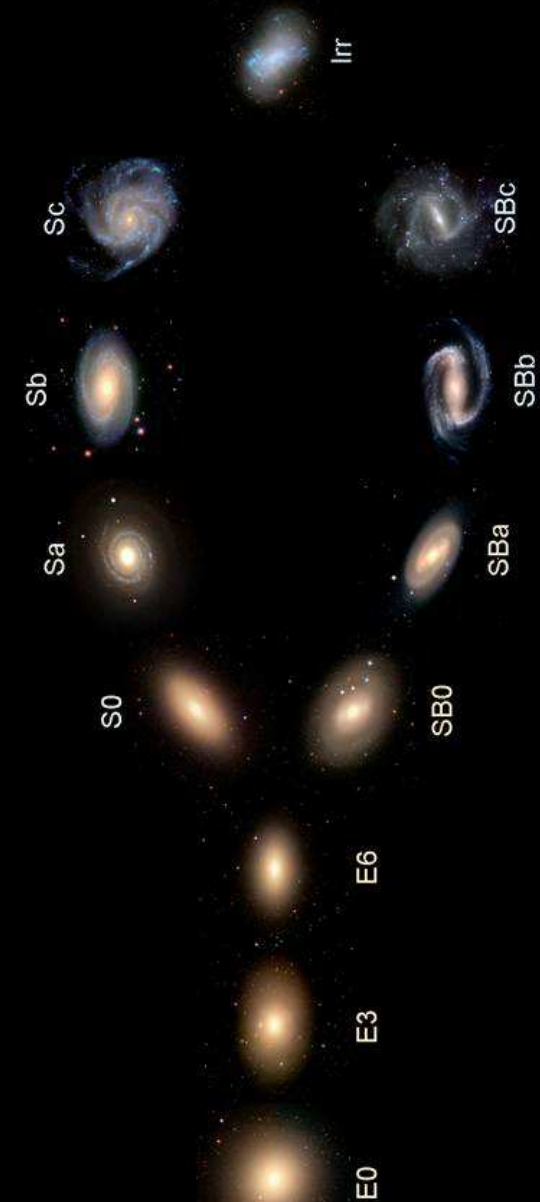




NGC 4150



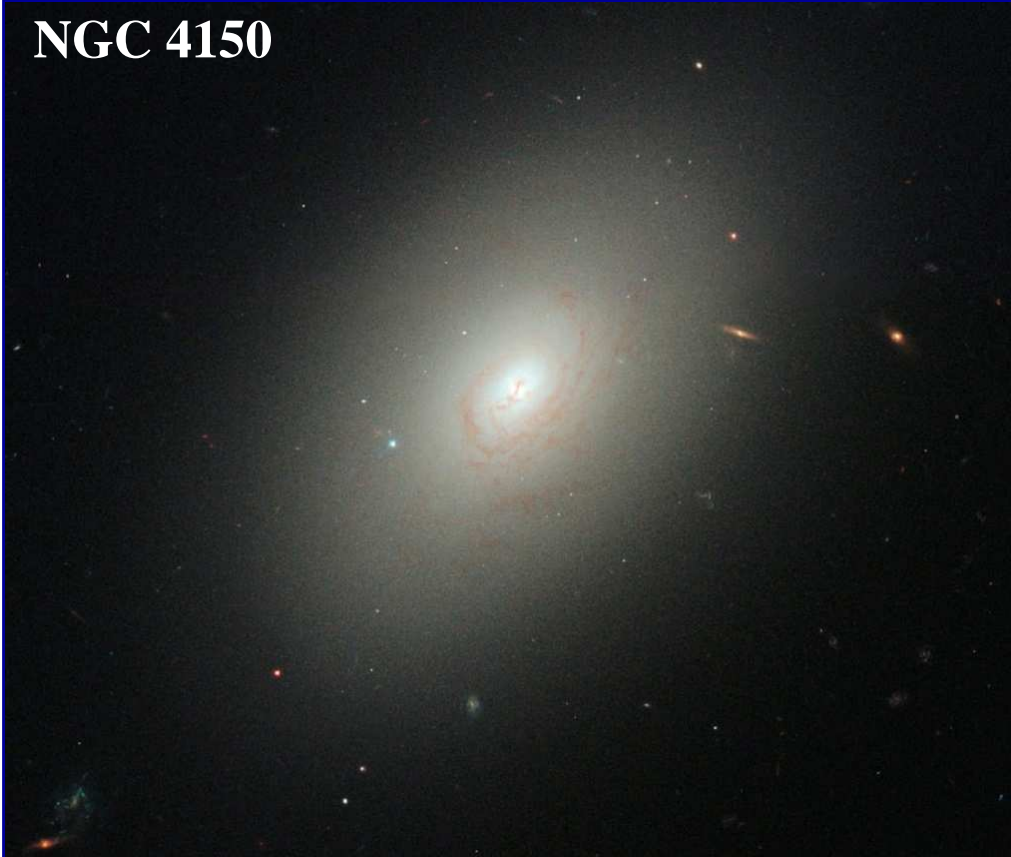
Hubble's Galaxy Classification Scheme



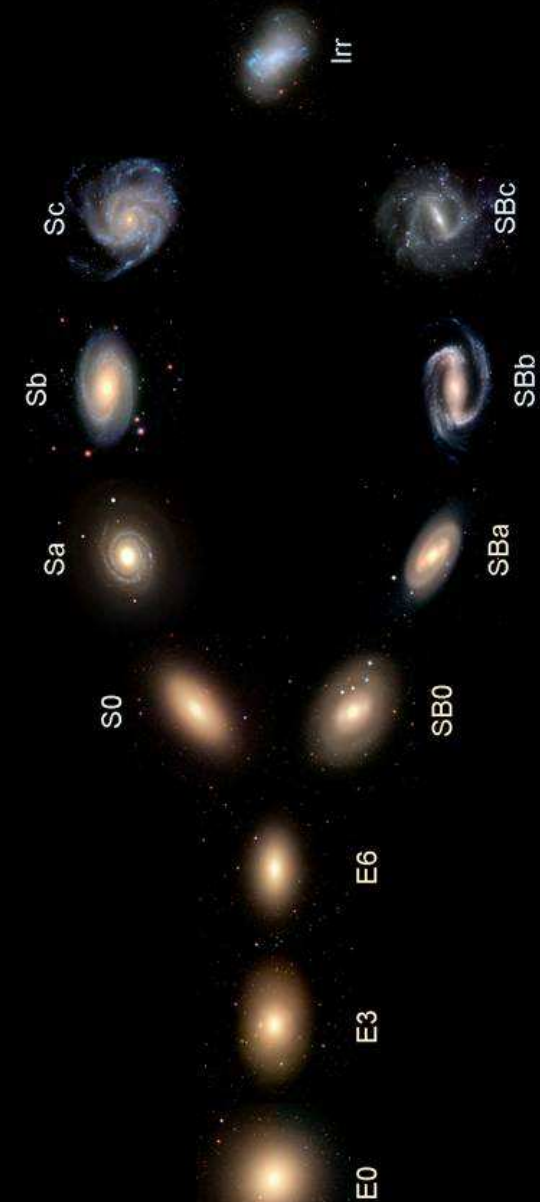


Elíptica

NGC 4150

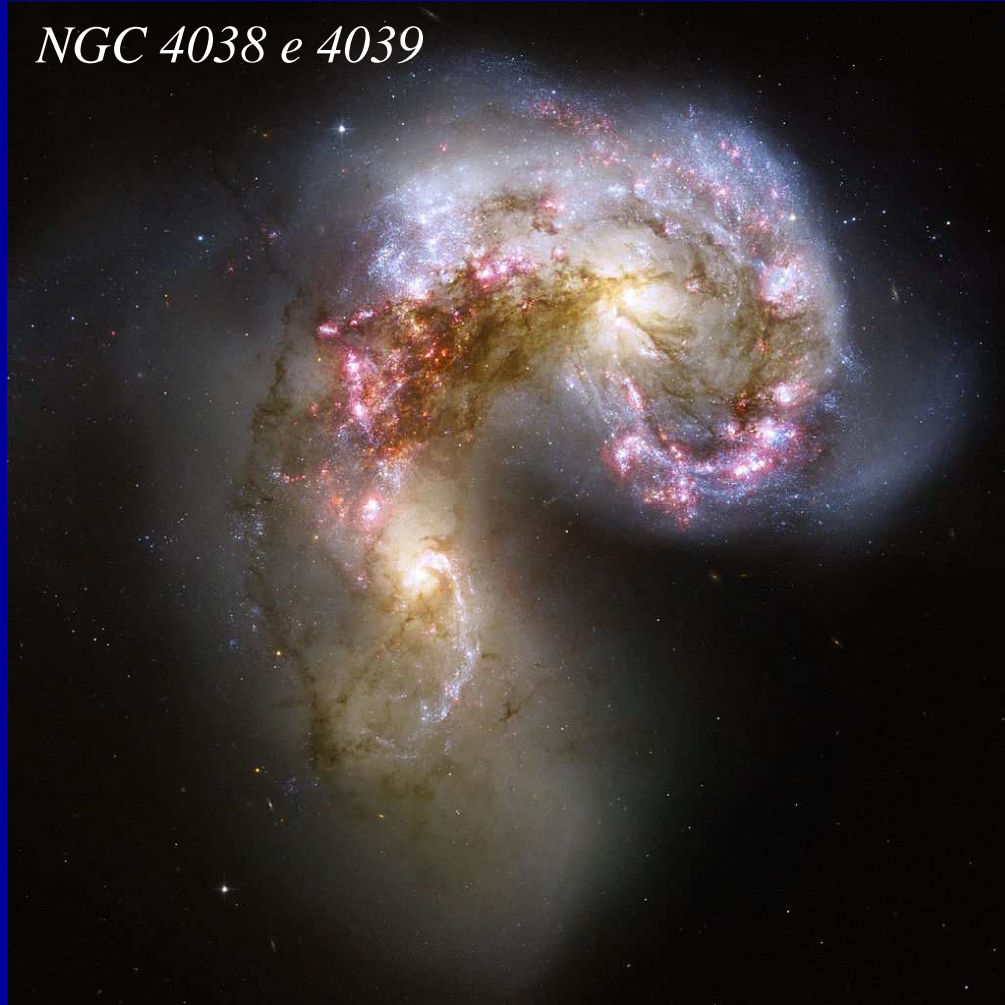


Hubble's Galaxy Classification Scheme

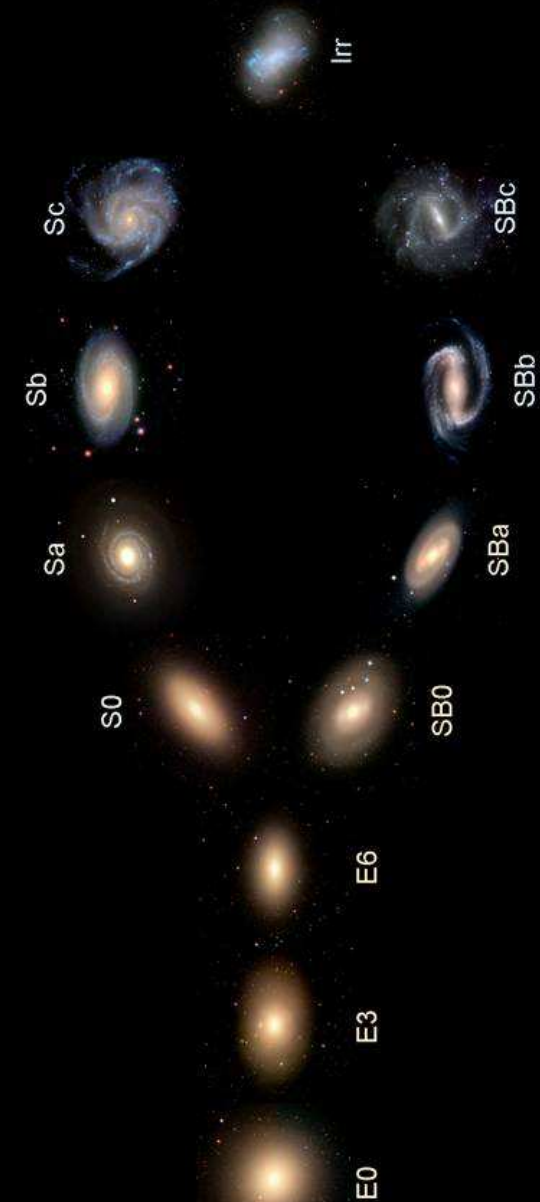




NGC 4038 e 4039



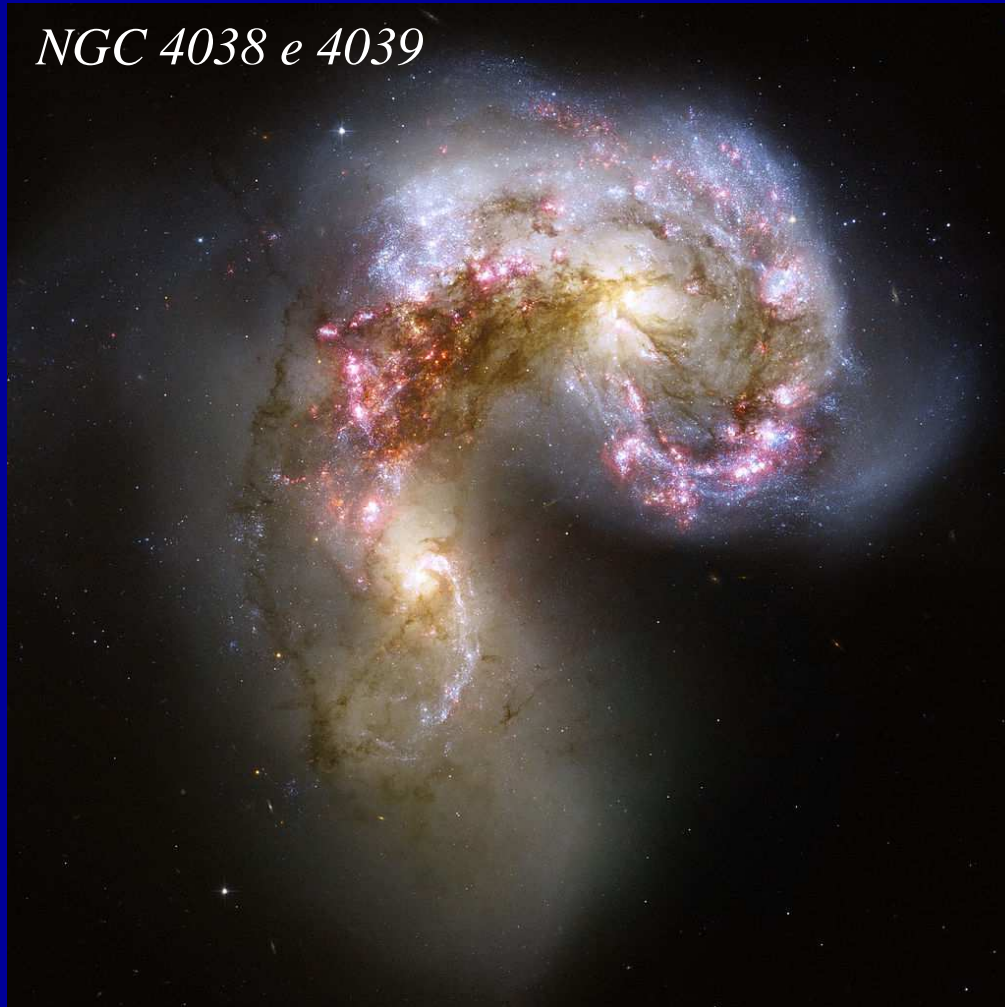
Hubble's Galaxy Classification Scheme



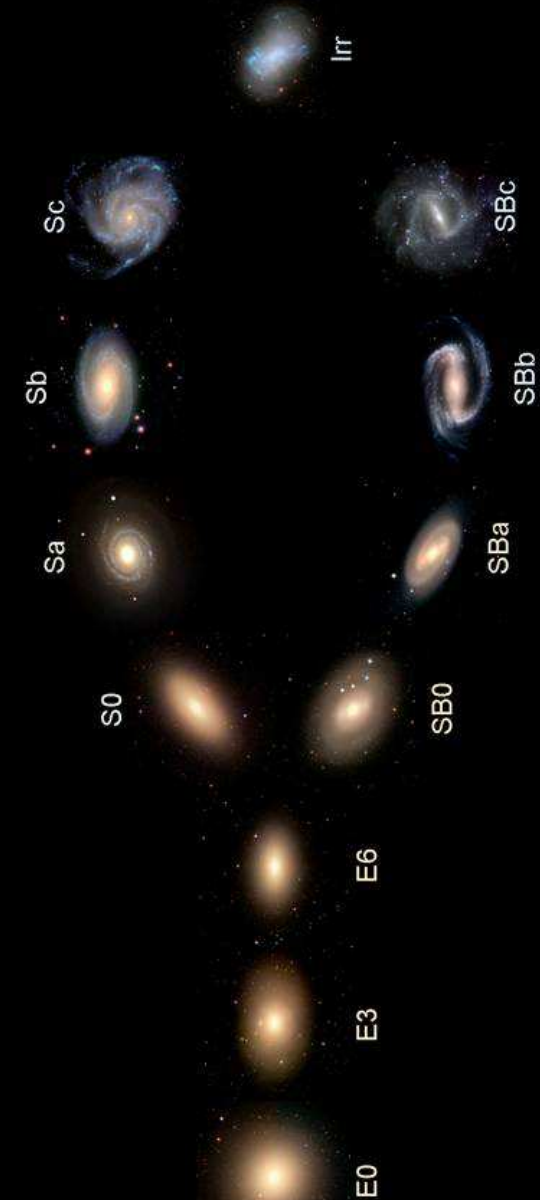


Um par de Galáxias Espirais em colisão

NGC 4038 e 4039



Hubble's Galaxy Classification Scheme

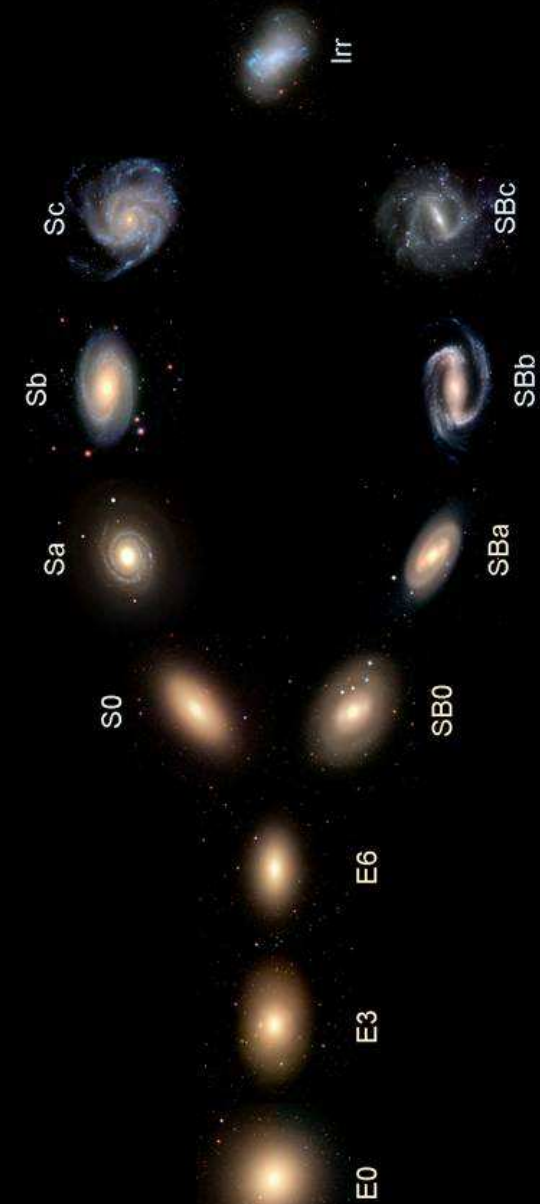




NGC 5866



Hubble's Galaxy Classification Scheme



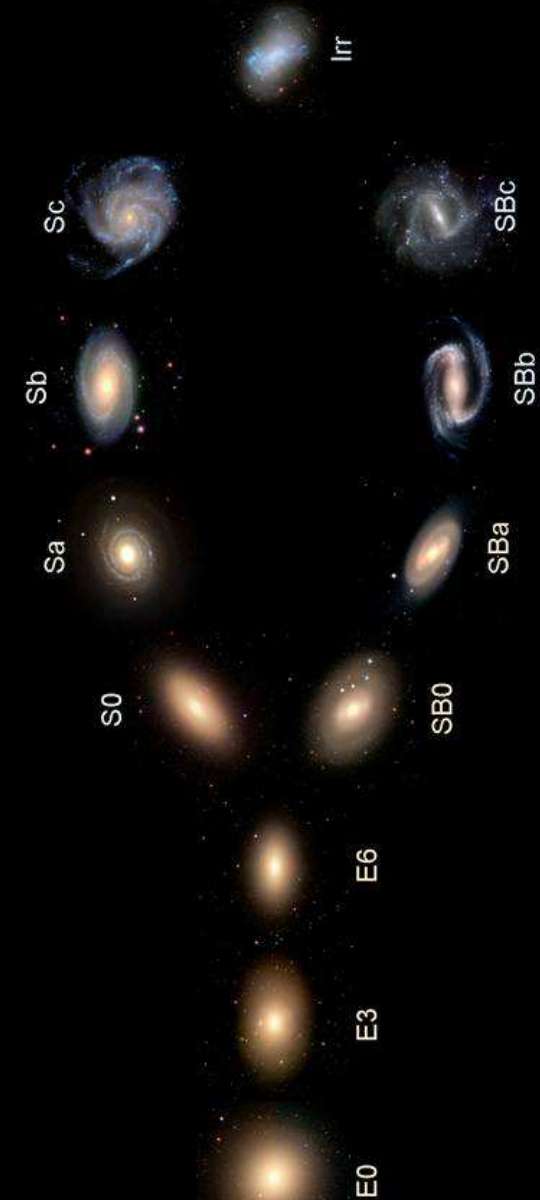


Galáxia lenticular: S0

NGC 5866

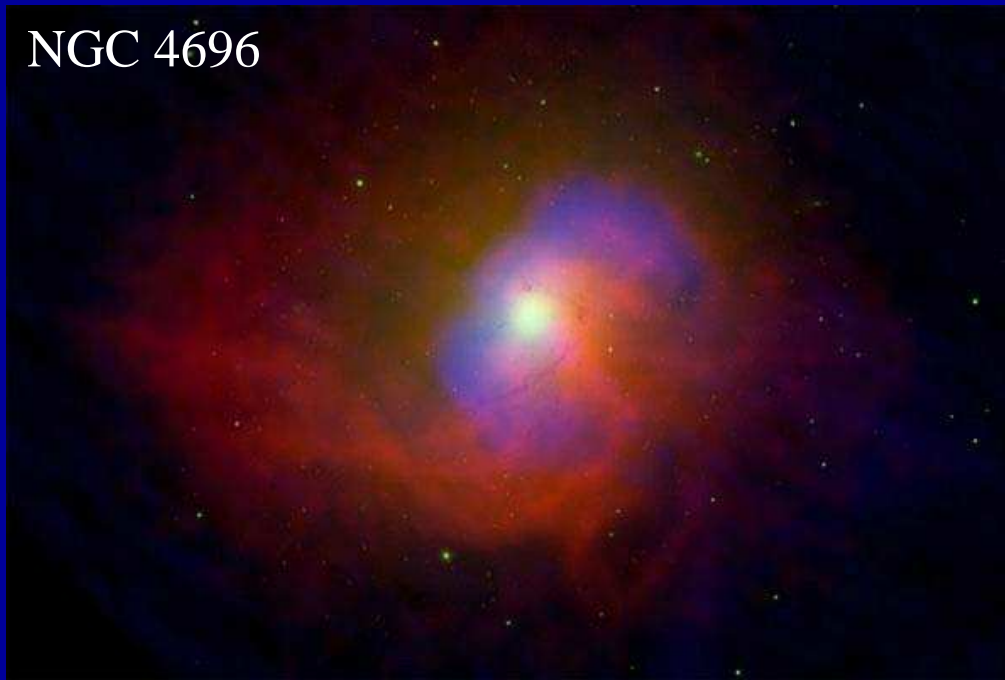


Hubble's Galaxy Classification Scheme

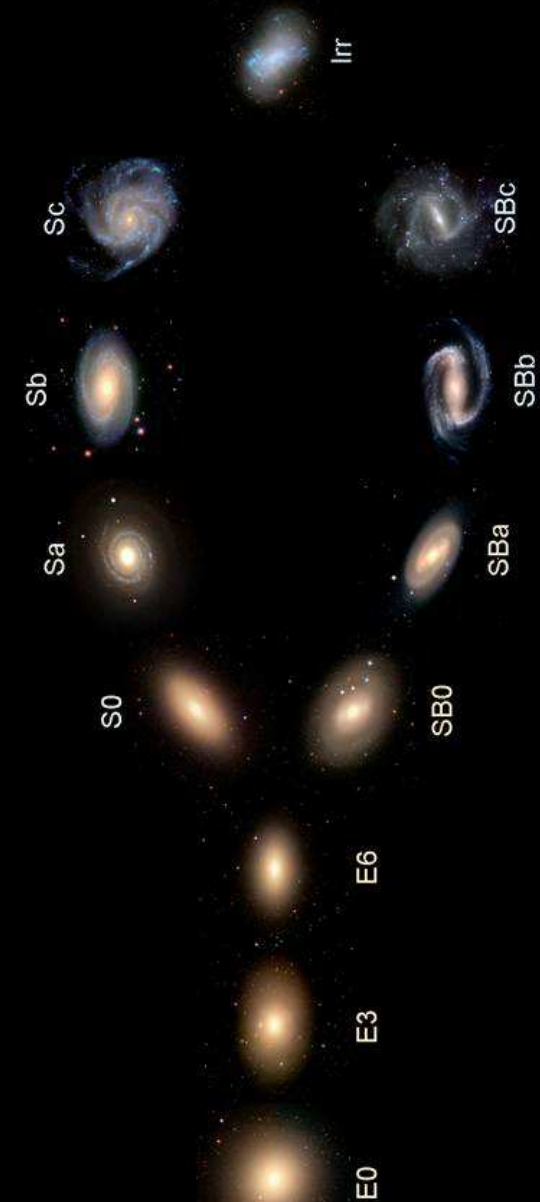




NGC 4696



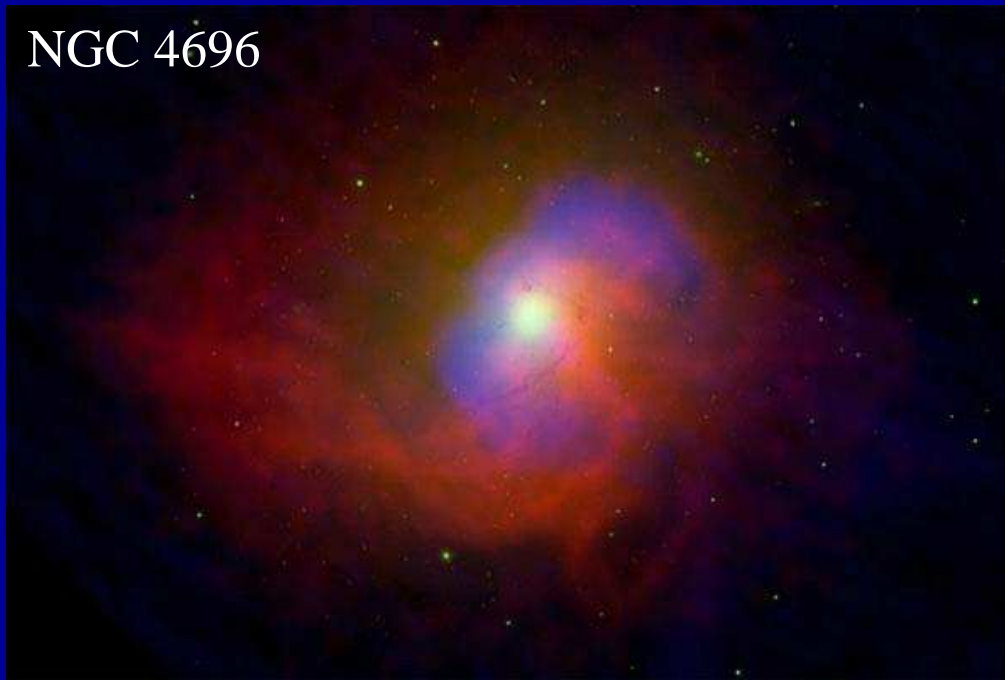
Hubble's Galaxy Classification Scheme



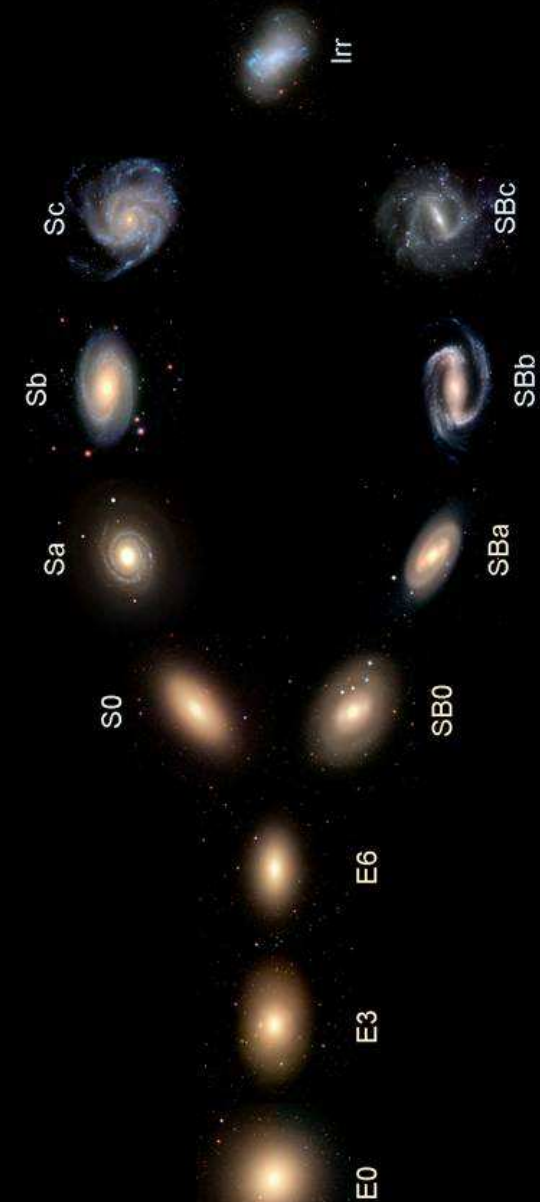


Elíptica com jatos de buraco negro supermassivo central

NGC 4696



Hubble's Galaxy Classification Scheme

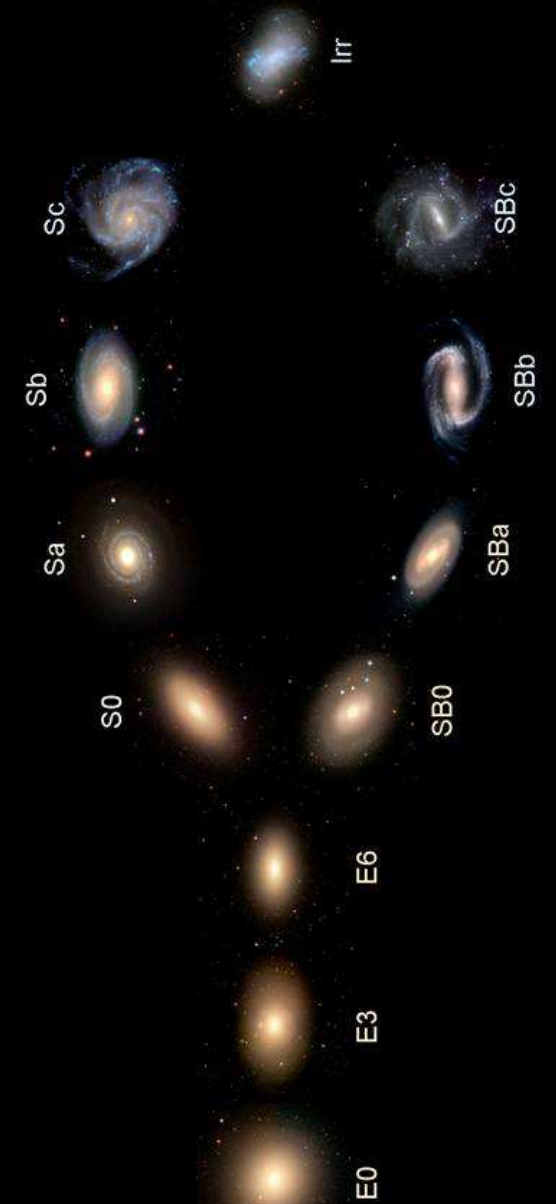




NGC 5128



Hubble's Galaxy Classification Scheme



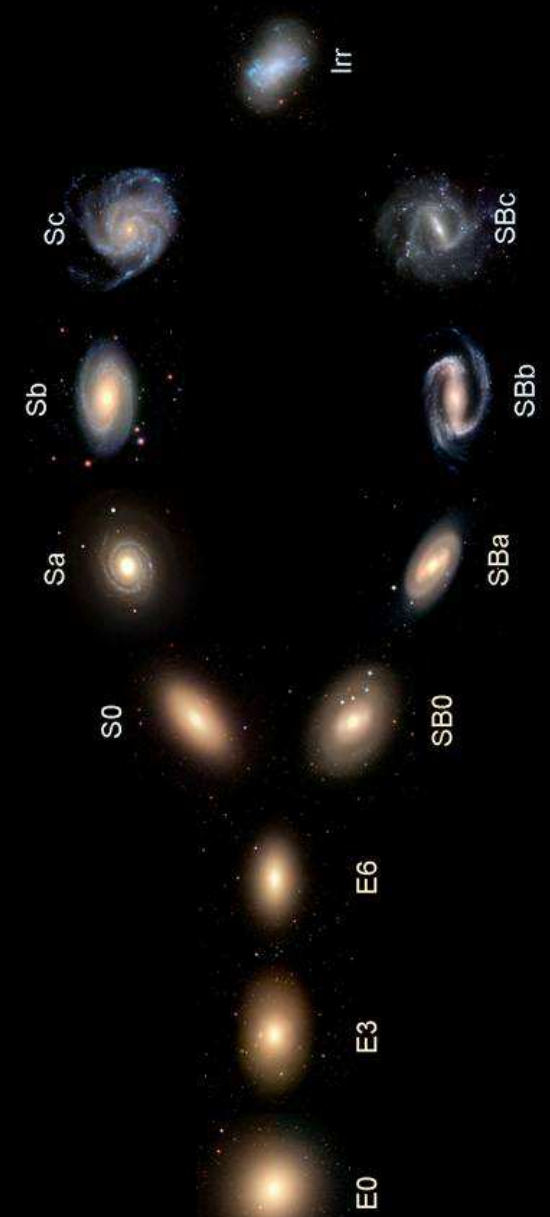


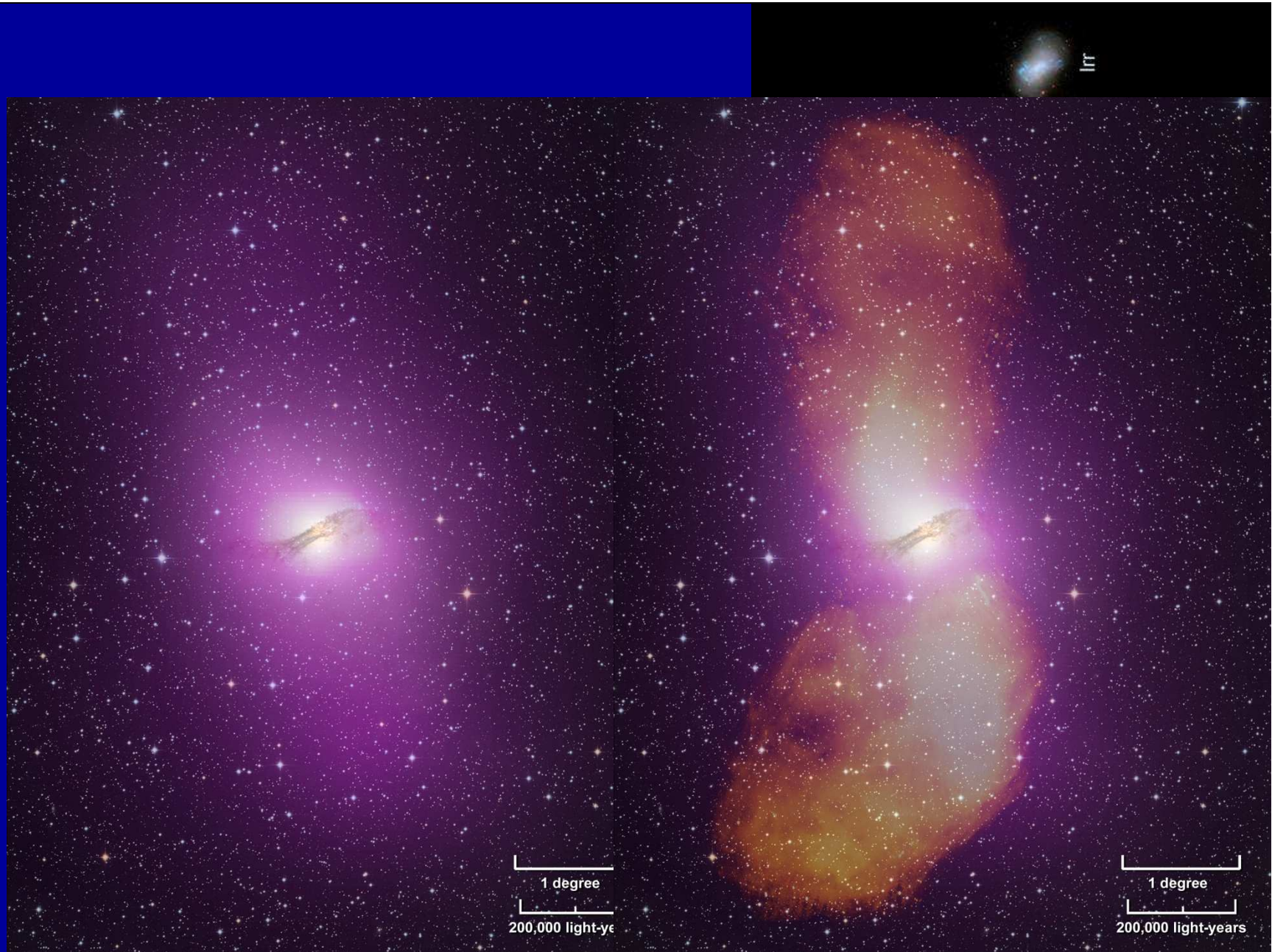
Elíptica Ativa

NGC 5128



Hubble's Galaxy Classification Scheme



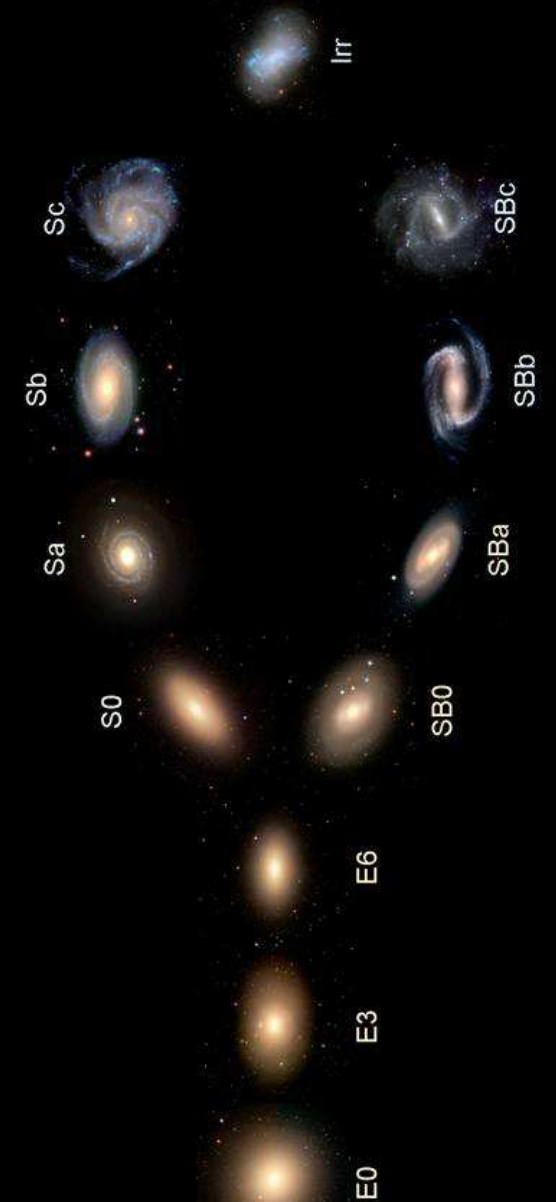




NGC 2841



Hubble's Galaxy Classification Scheme



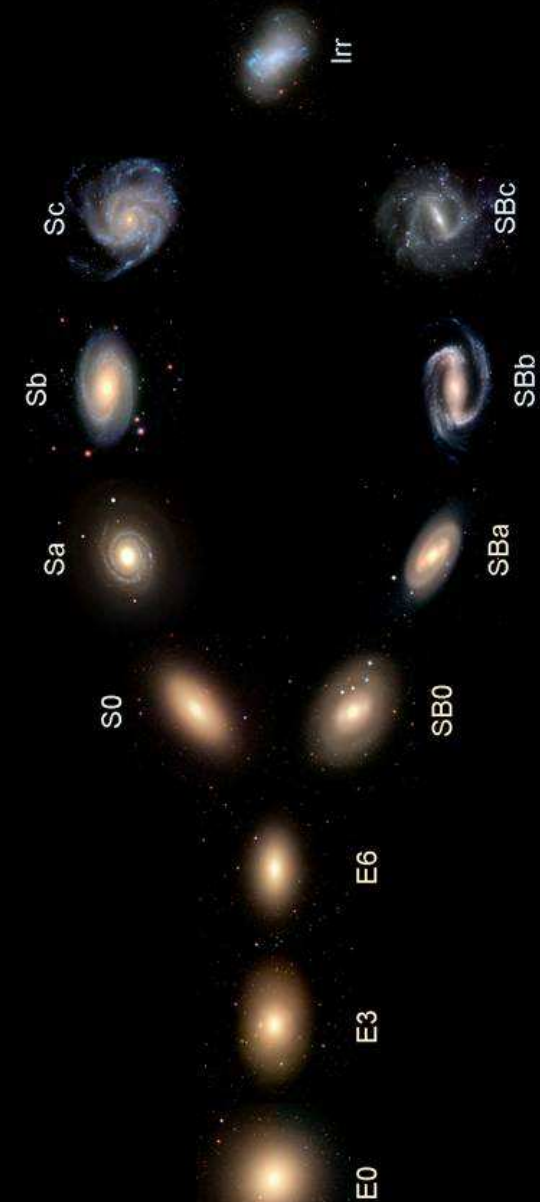


Espiral

NGC 2841

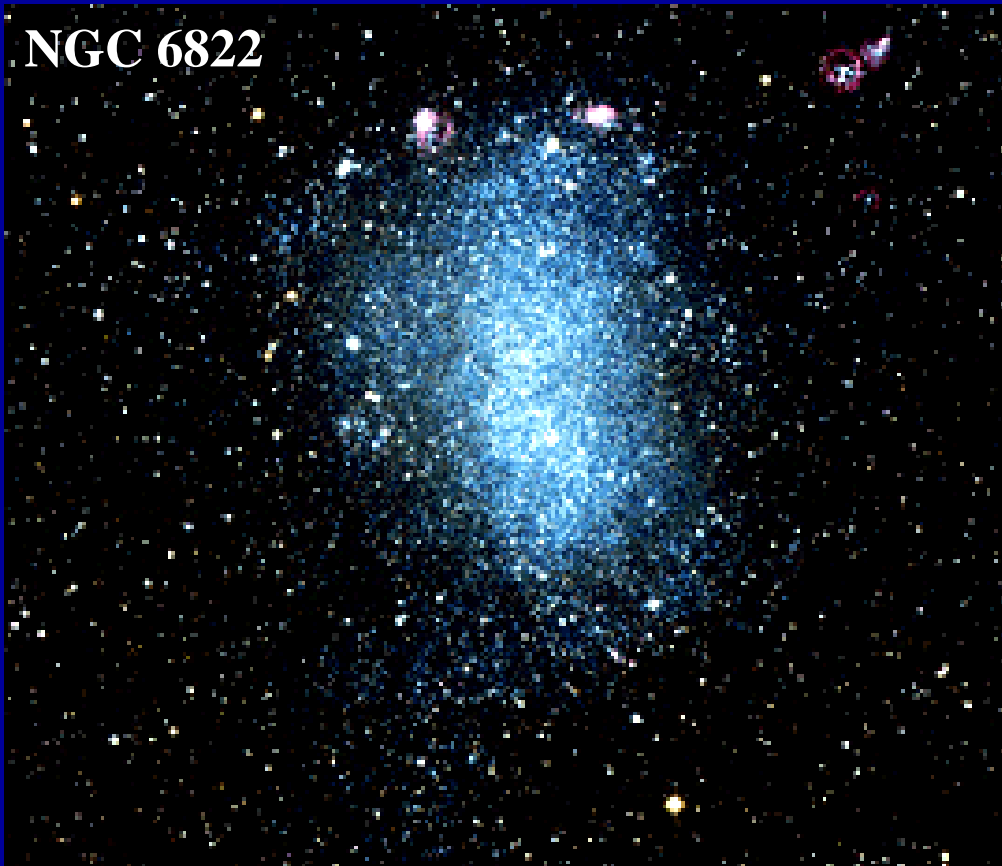


Hubble's Galaxy Classification Scheme

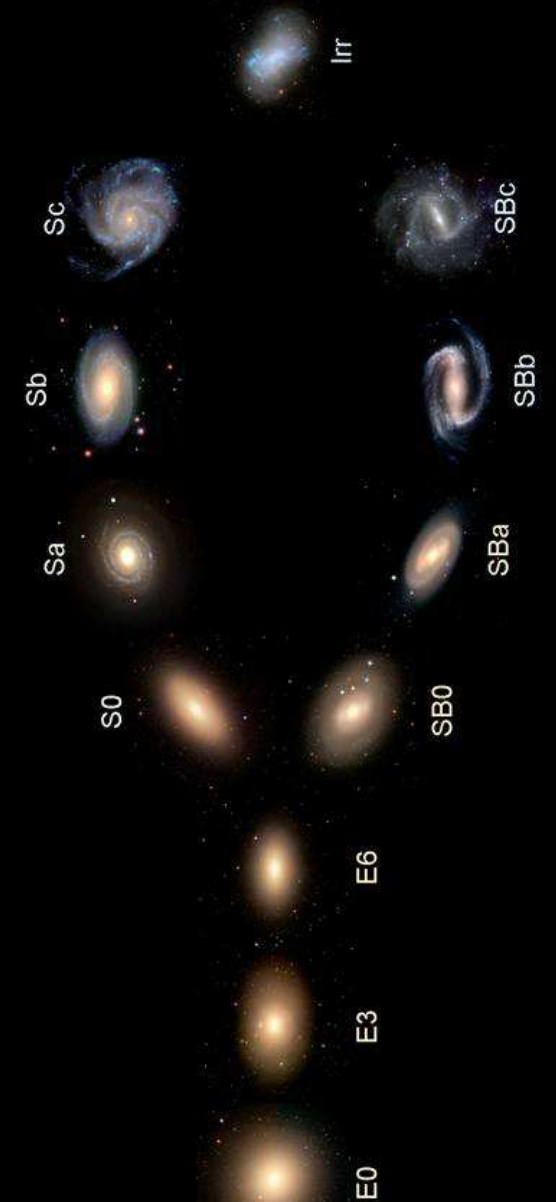




NGC 6822



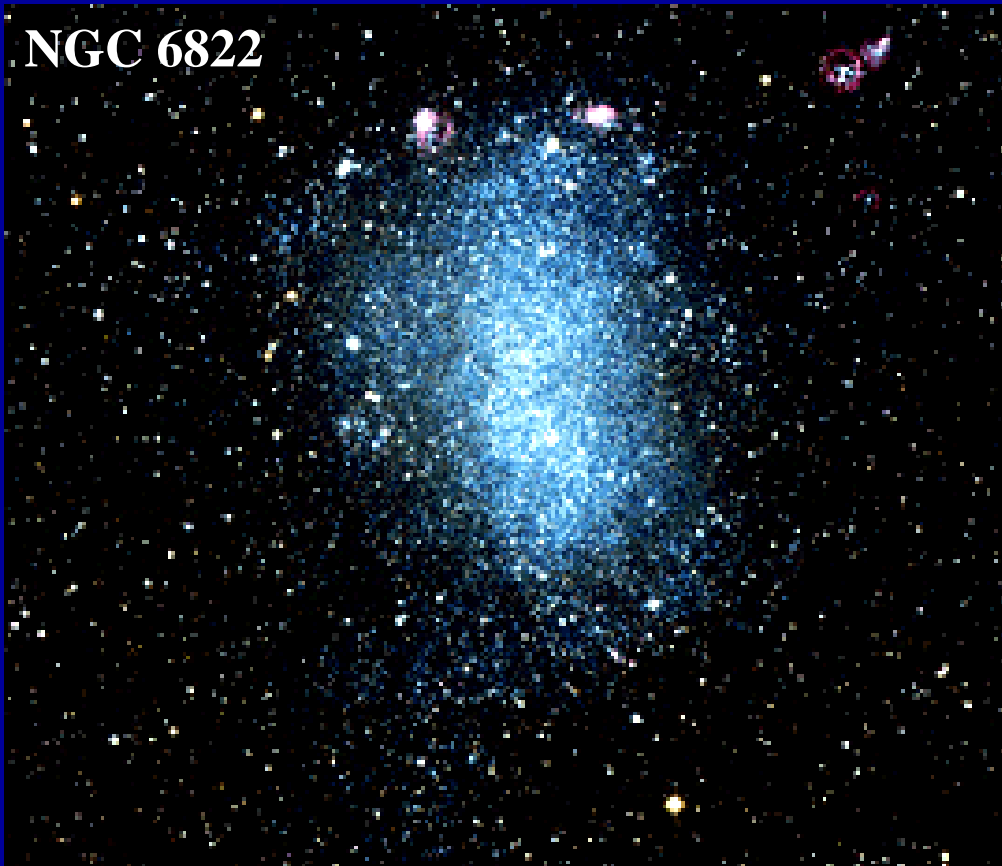
Hubble's Galaxy Classification Scheme



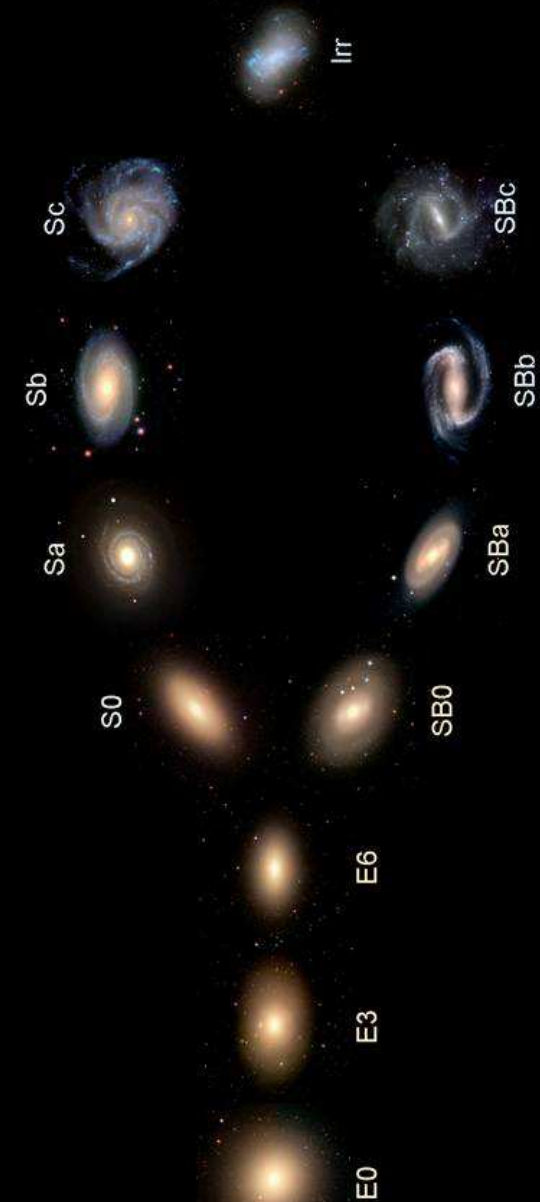


Irregular

NGC 6822



Hubble's Galaxy Classification Scheme

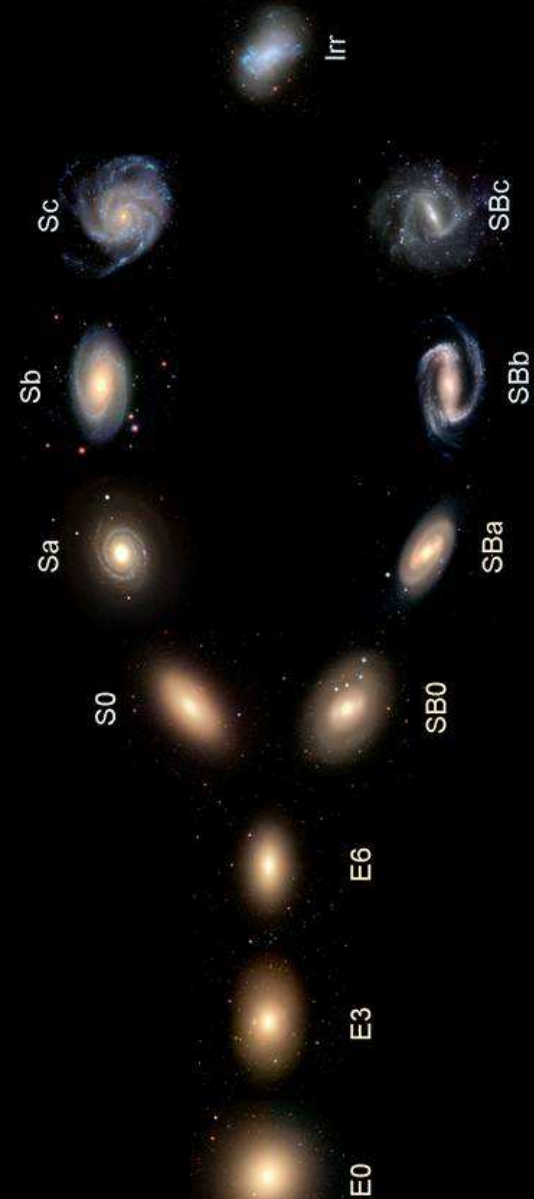




NGC 1068 (Messier 77)



Hubble's Galaxy Classification Scheme



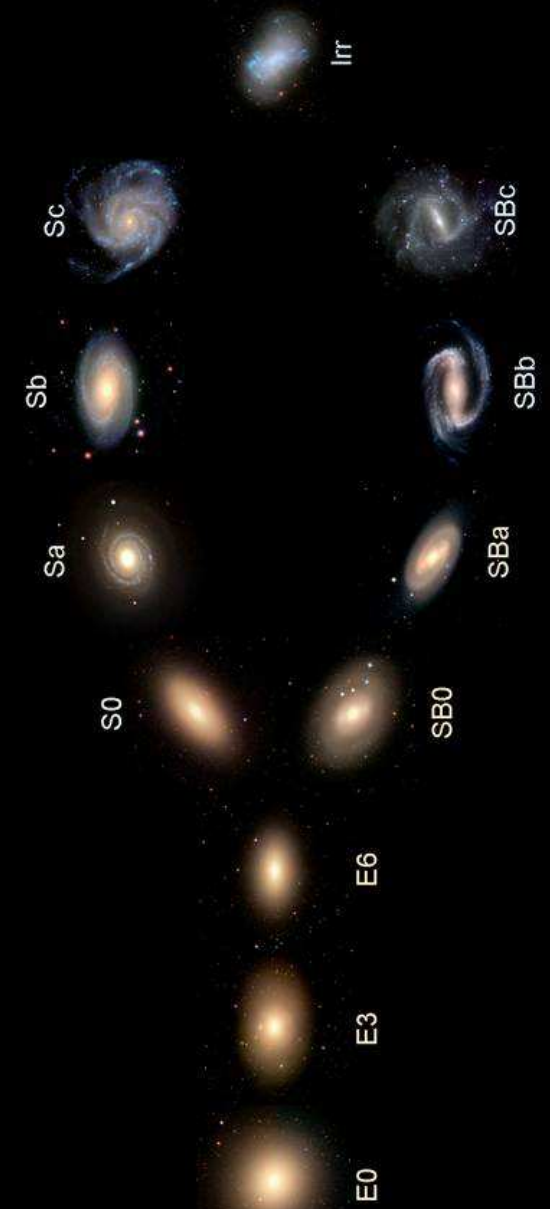


Espiral Barrada

NGC 1068 (Messier 77)



Hubble's Galaxy Classification Scheme

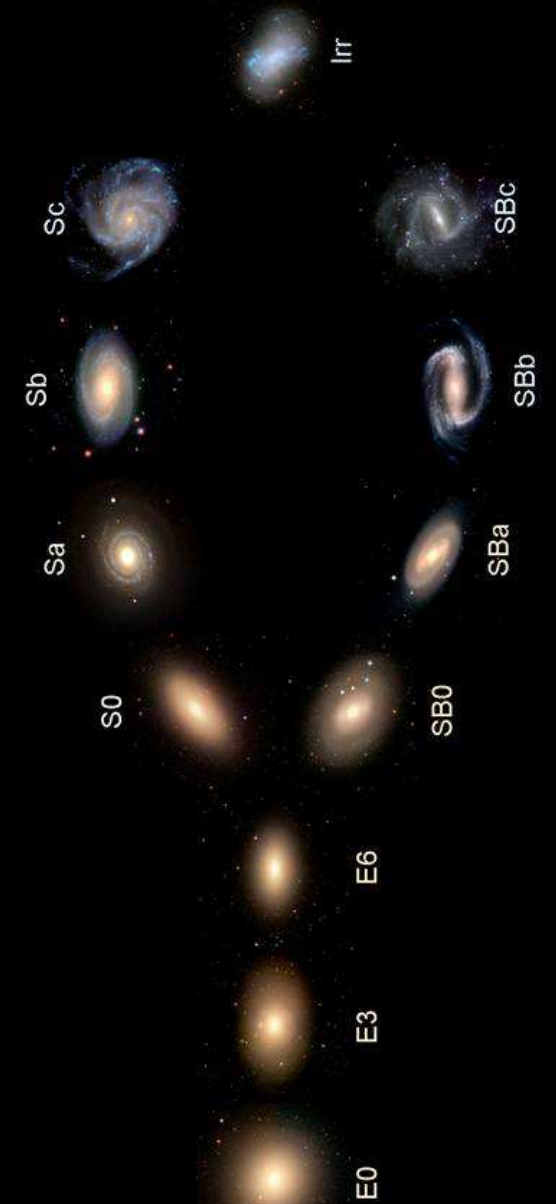




NGC 5128



Hubble's Galaxy Classification Scheme



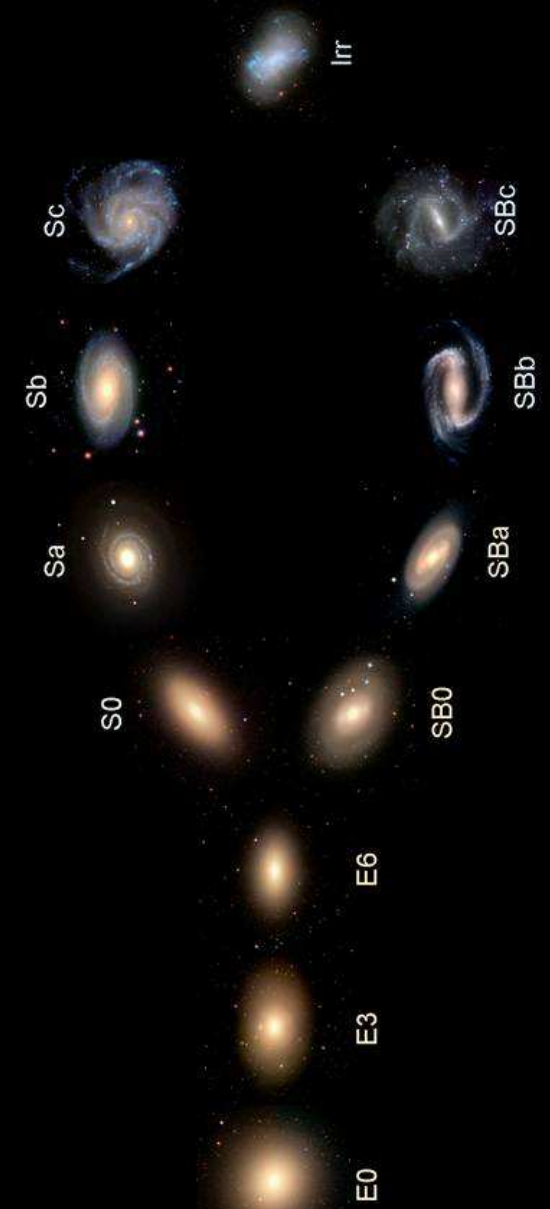


Galáxia lenticular (5ª galáxia mais brilhante no céu noturno)

NGC 5128

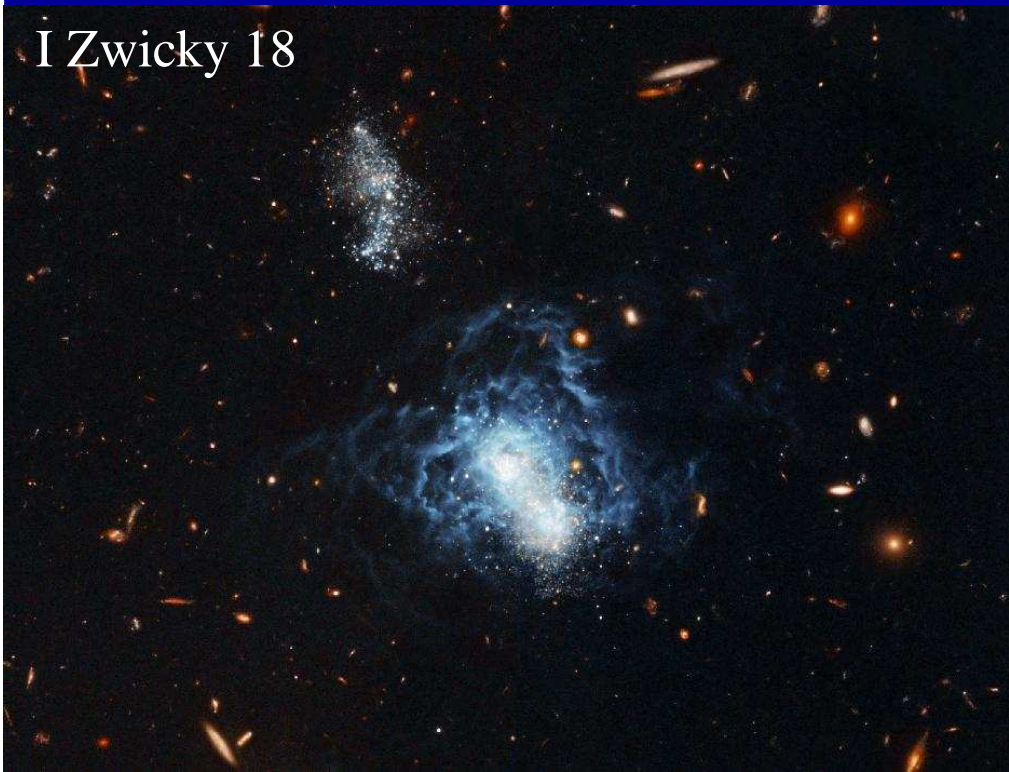


Hubble's Galaxy Classification Scheme

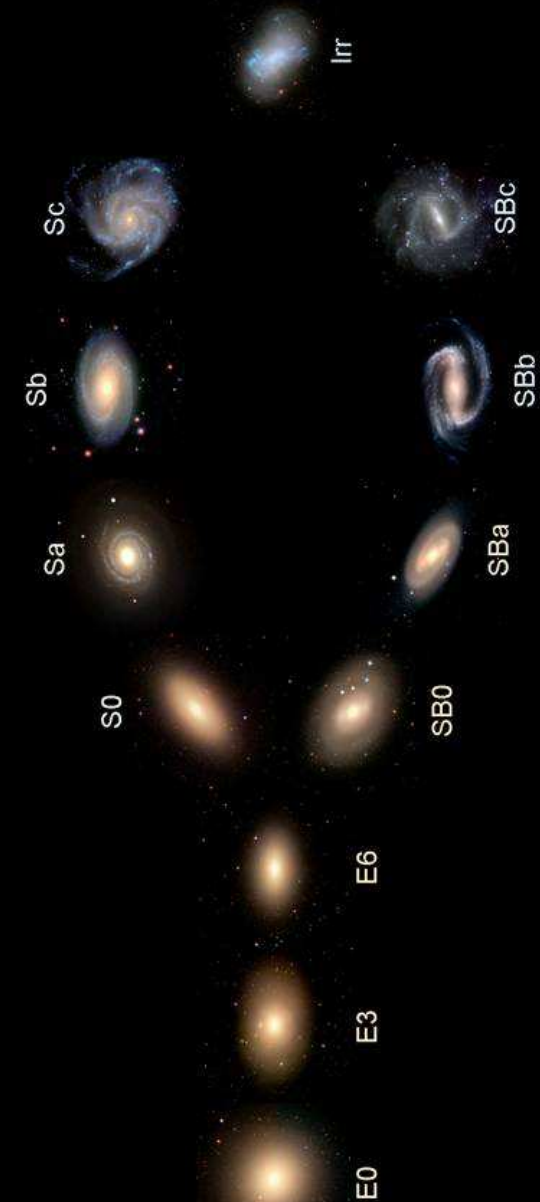




I Zwicky 18



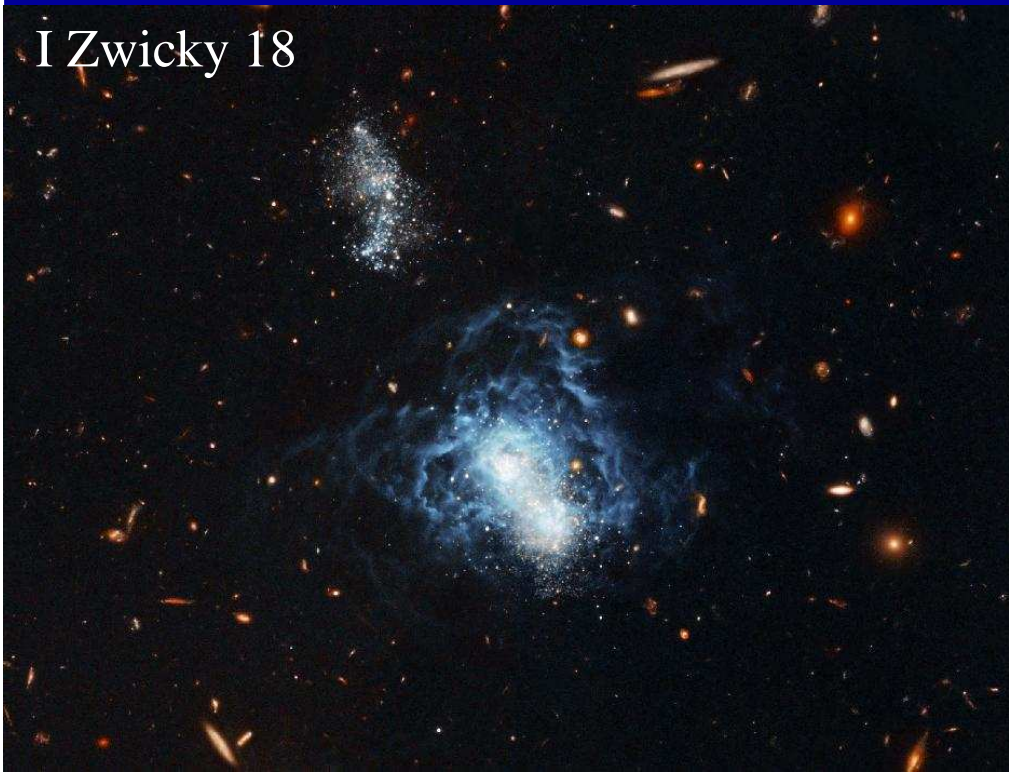
Hubble's Galaxy Classification Scheme



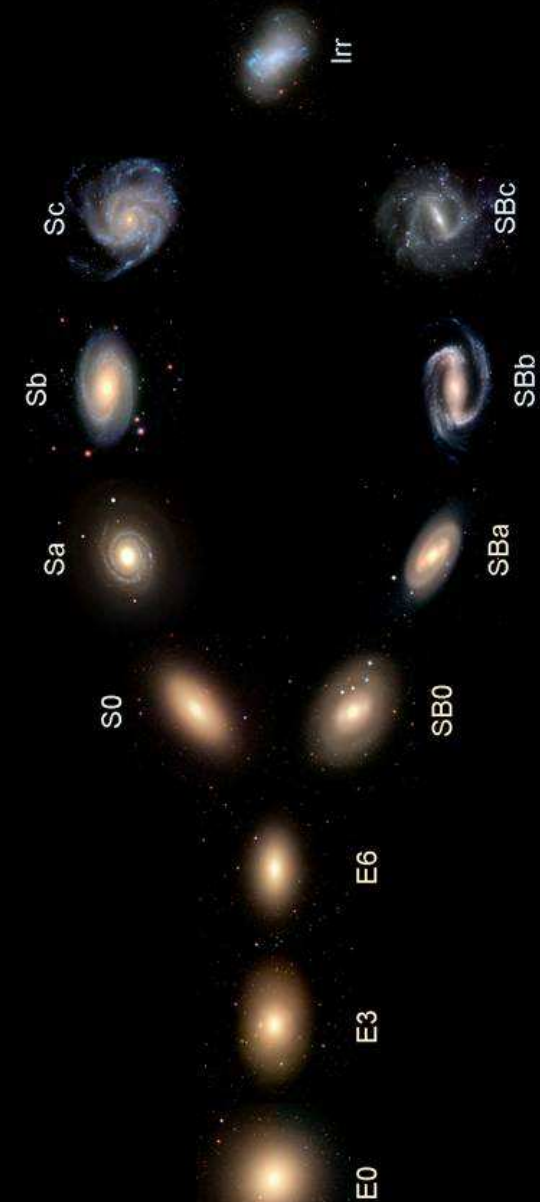


Anã Irregular

I Zwicky 18



Hubble's Galaxy Classification Scheme

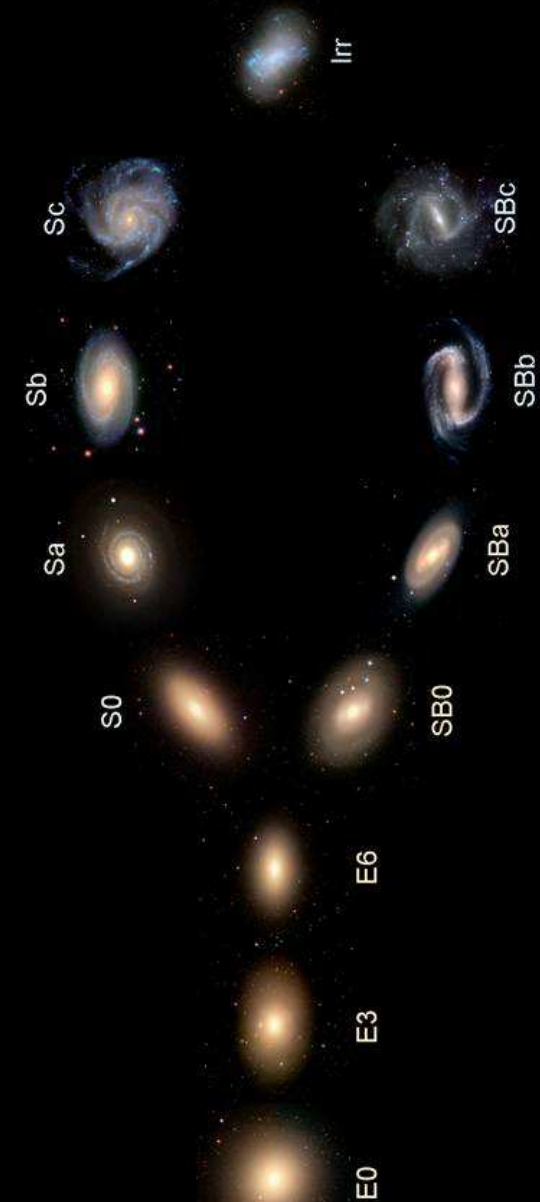




M83



Hubble's Galaxy Classification Scheme



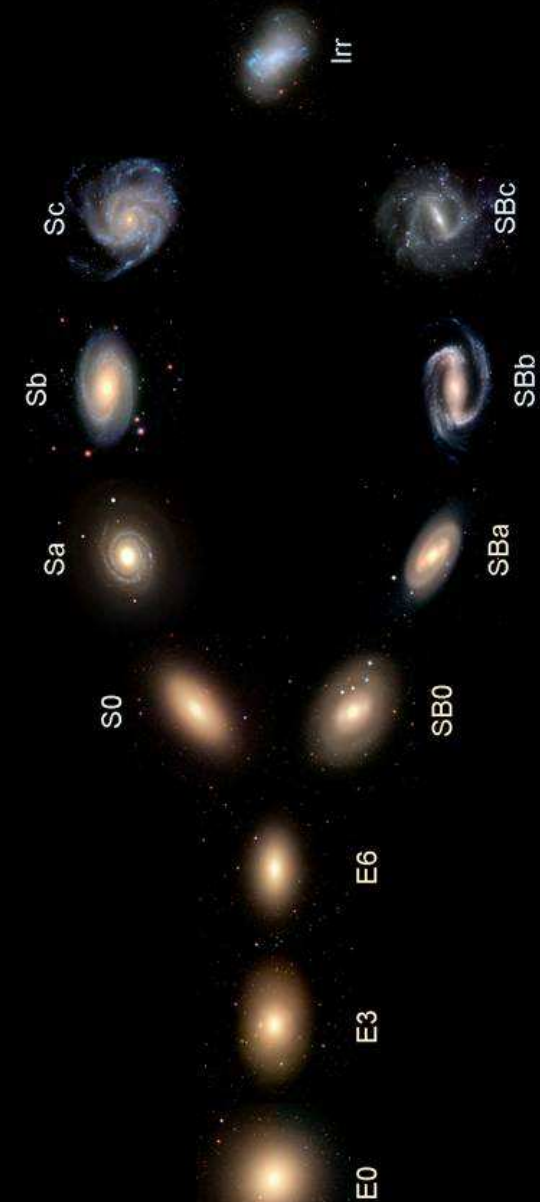


Espiral Barrada

M83



Hubble's Galaxy Classification Scheme

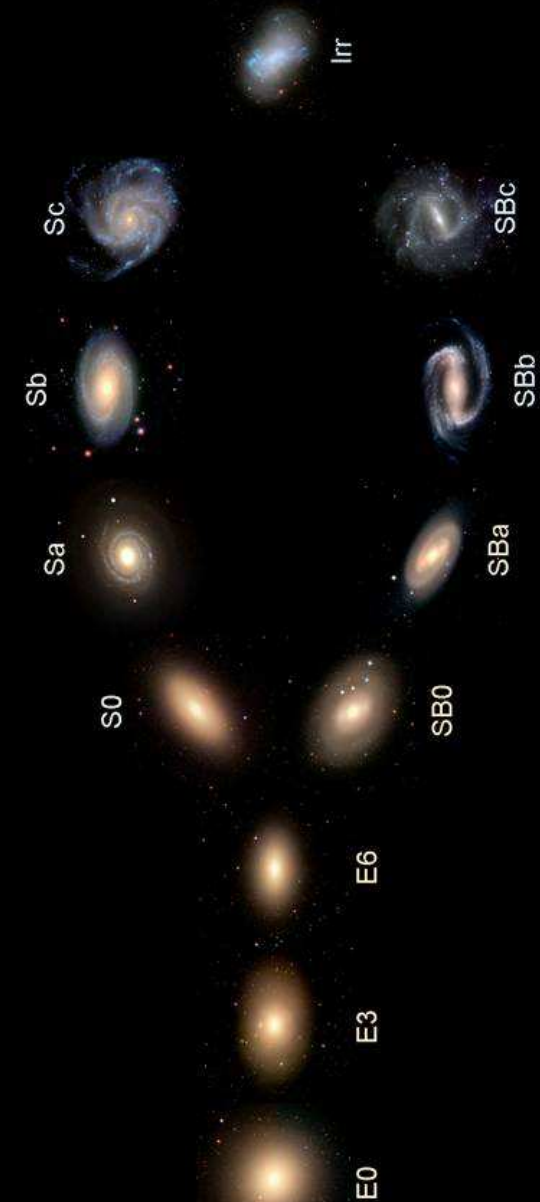




NGC 1569



Hubble's Galaxy Classification Scheme



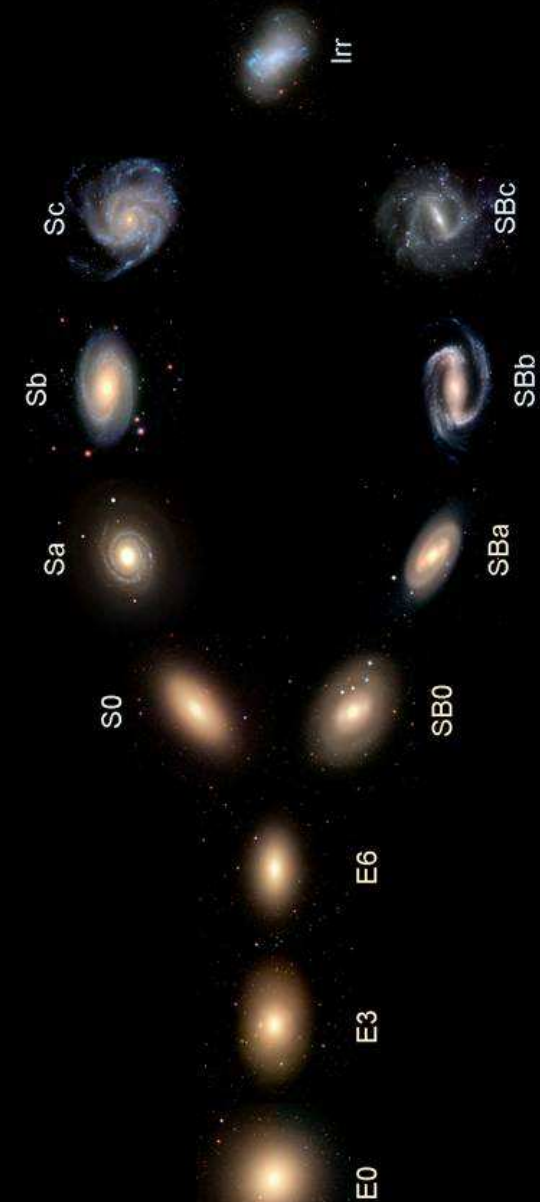


Anã Irregular

NGC 1569



Hubble's Galaxy Classification Scheme





<http://www3.uma.pt/Investigacao/Astro/Grupo/index.htm>
astro@uma.pt